



GUIDE FOR APPLICANTS

Capacities – Research Infrastructures
**COMBINATION OF COLLABORATIVE PROJECT AND COORDINATION
AND SUPPORT ACTION FOR INTEGRATING ACTIVITIES**

FP7-INFRASTRUCTURES-2008-1

*Further copies of this Guide, together with all information related to this call for proposals, can be downloaded from the following web-site:
<http://cordis.europa.eu/>*

About this Guide

This is version number 2 of the FP7 Guide for Applicants for calls using single-stage submission procedures.

The main part of this Guide (sections 1 and 3 to 5) is common to all such calls.

Information specific to this call is found in section 2 and in the annexes.

This version contains a number of clarifications and amendments, the most important of which are:

- Description of Combination of Collaborative project and Coordination and Support action for Integrating Activities
- Description of other funding schemes removed from section 2
- List of Associated Countries updated in section 3.
- Further guidance regarding the calculation of indirect costs, in annex 3.
- Minimum font size and page margins specified in annex 4.
- Two tables in annex 4 slightly modified.

Please note: This Guide is based on the rules and conditions contained in the legal documents relating to FP7 (in particular the Seventh Framework Programme, Specific Programmes, Rules for Participation, and the Work programmes), all of which can be consulted via the CORDIS web-site. The Guide does not in itself have legal value, and thus does not supersede those documents.

Contents

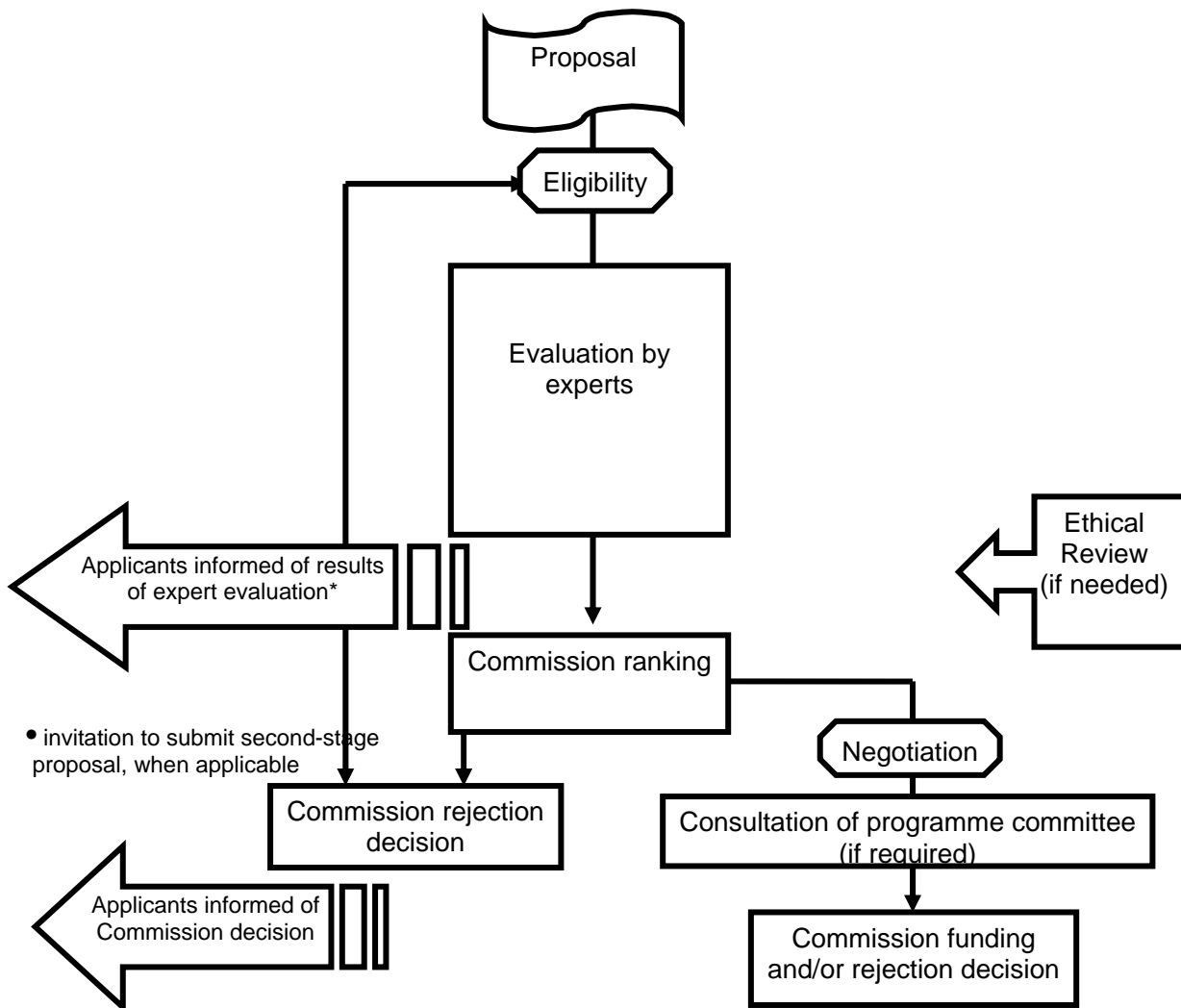
1. GETTING STARTED.....	7
2. ABOUT THE FUNDING SCHEME: <i>COMBINATION OF COLLABORATIVE PROJECT AND COORDINATION AND SUPPORT ACTION FOR INTEGRATING ACTIVITIES</i>.....	9
2.1 GENERAL.....	9
2.2 COLLABORATIVE PROJECTS.....	9
3. HOW TO APPLY.....	13
3.1. TURNING YOUR IDEA INTO AN EFFECTIVE PROPOSAL	13
3.2. PROPOSAL SUBMISSION.....	17
4. CHECK LIST	21
4.1. PREPARING YOUR PROPOSAL.....	21
4.2. FINAL CHECKS BEFORE SUBMISSION.....	22
5. WHAT HAPPENS NEXT	23
GLOSSARY.....	25
ANNEX 1:	33
TIMETABLE AND SPECIFIC INFORMATION FOR THIS CALL.....	33
ANNEX 2:	35
EVALUATION CRITERIA AND PROCEDURES TO BE APPLIED FOR THIS CALL	35
ANNEX 3.....	42
INSTRUCTIONS FOR COMPLETING "PART A" OF THE PROPOSAL	42
ANNEX 4.....	52
INSTRUCTIONS FOR DRAFTING "PART B" OF THE PROPOSAL.....	52

1. Getting started

Funding decisions in the Seventh Framework Programme (FP7) are made on the basis of **proposals** submitted following **calls** published by the Commission. Proposals describe planned research activities, information on who will carry them out, and how much they will cost. They must be submitted using a special web-based service before a strictly-enforced **deadline**. The Commission evaluates all eligible proposals in order to identify those whose quality is sufficiently high for possible funding. The basis for this **evaluation** is a peer-review carried out by independent experts.

The Commission then **negotiates** with some or all of those whose proposals have successfully passed the evaluation stage, depending on the budget available. If negotiations are successfully concluded, **grant agreements** providing for an EU financial contribution are established with the participants.

The sequence of steps is summarised in this flow chart:



This **Guide for Applicants** contains the essential information to guide you through the mechanics of preparing and submitting a proposal. It is important that you have the correct document! Not

only are there different Guides for different calls, there may also be different Guides for other funding schemes within the same call.

You must also refer to the **work programme** covering the theme¹ of FP7 related to this call. This provides a detailed description of the objectives and topics which are open for proposals, and will describe the wider context of research activities in this area. Work programmes are revised each year, so make sure you refer to the latest version before preparing your proposal.

*Please check that this is the right guide for you by consulting the work programme, the **call fiche** (both posted on CORDIS), and the description of the funding scheme in the next section.*

This Guide and the work programme are essential reading. However, you may also wish to consult other reference and background documents, particular those relating to negotiation and the grant agreements, which are available on the Commission's CORDIS web site (see annex 1 to this guide).

¹ In addition to the main domains of the "Cooperation" programme, the term "theme" is used in this guide to refer, as appropriate, to the parts of FP7 in "Capacities".

2. About the funding scheme: *Combination of Collaborative Project and Coordination and Support Action for Integrating Activities*

2.1 General

A number of funding schemes are available to implement projects in FP7, but only certain ones may be available for the topics covered by this call. These are indicated in the call fiche.

This Guide covers the combination of **collaborative project** and coordination and support action funding scheme, and a description is given in this section.

Please note that special conditions may apply on a call-by-call basis. These will always be set out in the work programme, including the call fiche.

2.2 Combination of Collaborative project and Coordination and Support action for Integrating Activities

Purpose

A combination of Collaborative project and Coordination and Support action (CP-CSA) allows to support under the same grant agreement *Research, Coordination and Support activities*.

Integrating Activities aim to provide a wider and more efficient access to and use of, the existing research infrastructures. This will ensure that European researchers may have access to the high performing research infrastructures they require to conduct their research, irrespective of the location of the infrastructure. Integrating Activities also aim to structure better and integrate, on a European scale, the way research infrastructures operate and to foster their joint development in terms of capacity and performance. The main characteristic of an Integrating Activity will be its capacity to mobilise a comprehensive consortium of stakeholders in a given class of infrastructures. In this way, operators of similar infrastructures should find it easier to develop synergies and complementary capabilities in such a way as to offer an improved access to researchers. Likewise, infrastructure operators and users should be in a better position to tackle new or unexpected developments in their field, for instance in relation to state-of-the-art instrumentation, with a more co-ordinated approach. More generally, a closer interaction between a large number of scientists active in and around a number of infrastructures will facilitate cross-disciplinary fertilisations and a wider sharing of knowledge and technologies across fields and between academia and industry. Normally, an Integrating Activity is expected to include several research infrastructures providing access. Exceptionally, the consortium may include only one facility providing access, if this facility is of a truly unique nature.

Specific Programme concerned

This Funding Scheme is to be used in particular for the implementation of the Integrating Activities under the Specific Programme "Capacities" – Part 1 Research infrastructures.

Participation

There must be at least three "legal entities" established in different EU Member States or Associated countries (the countries concerned are listed in section 3). The entities must be independent of each other.

A higher number of participants may be specified on a call-by-call basis. (See the call fiche).

"Target audience": Research infrastructures and their stakeholders, Research institutes, Universities, Industry, including SMEs, Potential end-users.

Size and resources

The size, scope and internal organisation of Integrating Activities should be compatible with overall objective and manageability of the whole endeavour and can vary from research theme to research theme and from topic to topic.

The requested EC contribution is expected to be in the range EUR 3 000 000 to 10 000 000. A higher EC contribution is possible only in well justified cases (e.g. facilities serving very large communities of users). In any case it is not foreseen that the EC contribution would be more than EUR 15 000 000.

Indicative average duration

Integrating Activities are expected to last up to a maximum of four years..

Activities

An Integrating Activity shall combine, in a closely coordinated manner: (i) *Networking activities*, (ii) *Trans-national access and/or service activities* and (iii) *Joint research activities*. All three categories of activities are mandatory as synergistic effects are expected from these different components.

(i) *Networking activities* (implemented as Coordination activities).

To foster a culture of co-operation between the participants in the project and the scientific communities benefiting from the research infrastructure. Networking activities could include (non exhaustive list):

- joint management and pooling of distributed resources;
- strengthening of virtual research communities;
- development of common standards, protocols and interoperability, benchmarking;
- development and maintenance of common databases for the purpose of networking and management of the users and infrastructures;
- spreading of good practices;
- provision of consultancy and training courses to new users;
- foresight studies for new instrumentation, methods, concepts and/or technologies;
- promotion of clustering and coordinated actions amongst related projects;
- coordination with national or international related initiatives and support to the deployment of global approaches to science;
- dissemination of knowledge;
- internal and external communication.

(ii) *Trans-national access and/or service activities* (implemented as support activities).

Trans-national access activities. To provide trans-national access to researchers or research teams to one or more infrastructures among those operated by participants. These access

activities should be implemented in a coordinated way such as to improve the overall services available to the research community. Access may be made available to external users, either in person ("hands-on") or through the provision of remote scientific services, such as the provision of reference materials or samples or the performance of sample analysis.

Community financial support should never exceed 20% of the annual operating costs of the infrastructure to prevent it from becoming dependent on the Community contribution and should not include capital investments. This financial support will serve to provide access "free of charge" to external users, including all the infrastructural, logistical, technological and scientific support (including training courses, travel and subsistence for users). Access costs will be defined on the basis of a unit cost related to the operating costs of the infrastructure.

The research infrastructures must publicise widely the access offered under the grant agreement to ensure that researchers who might wish to have access to the infrastructure are made aware of the possibilities open to them. They must maintain appropriate documentation to support and justify the amount of access reported. This documentation shall include records of the names, nationalities, and home institutions of the users within the research teams, as well as the nature and quantity of access provided to them.

The selection of researchers or research teams shall be carried out through an independent peer-review evaluation of their research projects. The research team, or its majority, must come from countries other than where the operator of the infrastructure is established (when the infrastructure is composed of several research facilities, operated by different legal entities, this condition shall apply to each facility) except in the case of a distributed set of resources or facilities offering remote access to the same services. Only research teams that are entitled to disseminate the knowledge they have generated under the project are eligible to benefit from research services to the infrastructure under the grant agreement. The duration of stay at a research infrastructure shall normally be limited to three months.

Service activities

To provide specific research infrastructures related services to the scientific community. This may include:

- scientific services freely available through communication networks (e.g. databases available via Internet). Only services widely used by the community of European researchers will be supported. In such case, projects of potential users would not normally be subject to peer review. However, in such cases, the services offered to the scientific community will be periodically assessed by an external board.

(iii) Joint Research activities (implemented as RTD activities).

These activities should be innovative and explore new fundamental technologies or techniques underpinning the efficient and joint use of the participating research infrastructures. To improve, in quality and/or quantity, the services provided by the infrastructures, these joint research activities could address (non exhaustive list):

- higher performance methodologies and protocols, higher performance instrumentation, including the testing of components, subsystems, materials, techniques and dedicated software;
- integration of installations and infrastructures into virtual facilities, innovative solutions for data collection, management, curation and annotation;
- innovative software solutions for making new user communities benefit from computing services.

An Integrating Activity will also include management over and above the technical management of individual work packages, linking together all the project components and maintaining communications with the Commission.

Form of Reimbursement

Reimbursement will be based on eligible costs (based on maximum rates of reimbursement specified in the grant agreement for different types of activities within the project). In some cases the reimbursement of indirect costs is based on a flat rate.

The work programmes shall specify if other forms of reimbursement are to be used in the actions concerned. International Cooperation Partner Countries (see annex 1 to the work programme) may opt for a lump sum.

Specific Characteristics

- The description of work (annex 1 to the grant agreement) is normally fixed. If needed a yearly update will be provided for in the grant agreement.
- Enlargement of partnership within the initial budget is possible.

3. How to apply

3.1. Turning your idea into an effective proposal

The coordinator

For a given proposal, the coordinator acts as the single point of contact between the participants and the Commission. The co-ordinator is generally responsible for the overall planning of the proposal and for building up the consortium that will do the work.

Focusing your planned work

The work you set out in your proposal must correspond to one or more of the topics, and associated **funding scheme(s)**, indicated in this call for proposals. **Proposals that fail to do so will be regarded as ineligible.**

Multidisciplinary proposals addressing several topics may be submitted, provided that the 'centre of gravity' lies in a topic or topics open in the call in question.

Refer to annex 2 to this Guide, and the work programme, to check all the **eligibility criteria** and any other additional conditions that apply.

Refer also to the **evaluation criteria** against which your proposal will be assessed. These are given in annex 2. Keep these in mind as you develop your proposal.

National Contact Points

A network of National Contact Points (NCPs) has been established to provide advice and support to organisations which are preparing proposals. You are highly recommended to get in touch with your NCP at an early stage. (Contact details are given on the CORDIS call page - annex 1 to this Guide).

Please note that the Commission will give the NCPs statistics and information on the outcome of the call and the outcome of the evaluation for each proposal. This information is supplied to support the NCPs in their service role, and is given under strict conditions of confidentiality.

Other sources of help

Annex 1 to this guide gives references to these further sources of help for this call. In particular:

- The Commission's general **enquiry service** on any aspect of FP7. Questions can be sent to a single e-mail address and will be directed to the most appropriate department for reply.
- A dedicated help desk has been set up to deal with technical questions related to the **Electronic Proposal Submission Service (EPSS)**. See section 3.2 below.

- A further help desk providing assistance on intellectual property matters.
- Any other guidance documents or background information relating specifically to this call.
- The date and contact address for any '**information day**' that the Commission may be organising for this call.
- Other services, including partner search facilities, provided via the CORDIS web site.

Who can participate?

In principle, a legal entity may participate in a proposal no matter where it is established.

A legal entity can be a so-called "natural person" (e.g. Mme Dupont) or a "legal person" (e.g. National Institute for Research).

However, there are certain minimum conditions that have to be met relating to participation from the EU and Associated countries. These conditions vary between funding scheme and may vary from call to call. See the call fiche for the conditions applicable to this call.

The EU Member States are:

Austria, Belgium, Bulgaria, Cyprus, Czech Republic, Denmark, Estonia, Finland, France, Germany, Greece, Hungary, Ireland, Italy, Latvia, Lithuania, Luxembourg, Malta, Netherlands, Poland, Portugal, Romania, Slovakia, Slovenia, Spain, Sweden, United Kingdom.

The Associated Countries are:

a) Croatia, FYR Macedonia, Iceland, Israel, Liechtenstein, Norway, Serbia, Switzerland and Turkey

b) Albania and Montenegro, as of 1 January 2008 (subject to satisfactory completion of the decision-making procedure associating these countries via a Memorandum of Understanding)

Other countries may become associated during the course of FP7. The latest news will be posted on the CORDIS web site.

The following may receive EU funding in an FP7 project:

- Any legal entity established in a Member State or an Associated country (including the European Commission's Joint Research Centre), or created under Community law (e.g. a European Economic Interest Grouping),
- Any International European Interest Organisation (see glossary).
- Any legal entity established in an FP7 International Cooperation Partner Country (ICPC). The list of ICPC can be found on the CORDIS web site, and is given in Annex 1 to the related work programme.

In the case of a participating international organisation, other than an international European interest organisation, or a legal entity established in a non-EU country other than an associated country or ICPC, a Community financial contribution may be granted provided that at least one of the following conditions is satisfied:

- (a) Provision is made to that effect in the specific programmes or in the relevant work programme,
- (b) It is essential for carrying out the indirect action,
- (c) Such funding is provided for in a bilateral scientific and technological agreement or any other arrangement between the Community and the country in which the legal entity is established.

International cooperation

The Commission attaches great importance to international cooperation in research, and FP7 has been designed to ensure that such activities can be integrated across the programme. In addition to the opportunities mentioned above, which are generally applicable, calls may include:

- Topics of mutual interest defined in the work programmes where international cooperation is particularly encouraged.
- Specific international cooperation actions (SICA), also on topics of mutual interest. Here special minimum conditions apply.

Please check the work programme, including the call fiche, to see if these possibilities apply to this call.

Ethical principles

Please remember that research activities in FP7 should respect fundamental ethical principles, including those reflected in the Charter of Fundamental Rights of the European Union. These principles include the need to ensure the freedom of research and the need to protect the physical and moral integrity of individuals and the welfare of animals. For this reason, the European Commission carries out an ethical review of proposals when appropriate. The following fields of research shall not be financed under this Framework Programme:

- research activity aiming at human cloning for reproductive purposes;
- research activity intended to modify the genetic heritage of human beings which could make such changes heritable¹;
- research activities intended to create human embryos solely for the purpose of research or for the purpose of stem cell procurement, including by means of somatic cell nuclear transfer.

As regards human embryonic stem cell research, the Commission will maintain the practice of the Sixth Framework Programme, which excludes from Community financial support research activities destroying human embryos, including for the procurement of stem cells. The exclusion of funding of this step of research will not prevent Community funding of subsequent steps involving human embryonic stem cells.

Risk-Sharing Finance Facility (RSFF)

This innovative debt-based facility, designed by the European Commission and the European Investment Bank creates an additional capacity of up to EUR 10 billion for financing higher risk research, technological development, demonstration and innovation activities. The EIB will implement RSFF in close collaboration with all major EU national and regional banks within Member States and Associated Countries to FP7, which are providing support to the development of

¹ Research relating to cancer treatment of the gonads can be financed.

European companies. Financing through the RSFF can be sought either in addition to, or instead of FP7 grants.

For additional information on RSFF see:

<http://www.eib.org/products/loans/special/rsff/index>

http://ec.europa.eu/invest-in-research/funding/funding02_en.htm

Presenting your proposal

A proposal has two parts:

Part A will contain the administrative information about the proposal and the participants. The information requested includes a brief description of the work, contact details and characteristics of the participants, and information related to the funding requested (see annex 3 to this Guide). This information will be encoded in a structured database for further computer processing to produce, for example, statistics, and evaluation reports. This information will also support the experts and Commission staff during the evaluation process.

The information in Part A is entered through a set of on-line forms.

Part B is a "template", or list of headings, rather than an administrative form (see annex 4 to this Guide). You should follow this structure when presenting the scientific and technical content of your proposal. The template is designed to highlight those aspects that will be assessed against the **evaluation criteria**. It covers, among other things, the nature of the proposed work, the participants and their roles in the proposed project, and the impacts that might be expected to arise from the proposed work. Only black and white copies are used for evaluation and you are strongly recommended, therefore, not to use colour in your document.

Part B of the proposal is uploaded by the applicant into the Electronic Proposal Submission Service (EPSS) described below.

A maximum length may be specified for the different sections of Part B, or for Part B as a whole (see annex 4 to this Guide). You must keep your proposal within these limits. Even where no page limits are given, or where limits are only recommended, it is in your interest to keep your text concise since over-long proposals are rarely viewed in a positive light by the evaluating experts.

*A small number of calls operate a **continuous submission procedure**. These calls are open for an extended period, during which proposals will be evaluated in batches after fixed cut-off dates. The call fiche will show whether intermediate cut-off dates apply to his call.*

Proposal language

Proposals may be prepared in any official language of the European Union. If your proposal is not in English, a translation of the full proposal would be of assistance to the experts. An English translation of the abstract may be included in Part B of the proposal.

3.2. Proposal submission

Please be aware that, for maintenance reasons, the EPSS application will not be available during December 2007, until mid January 2008. Submission will not be possible during this time. The exact downtime will be indicated on the EPSS website.

About the EPSS

Proposals must be submitted electronically, using the Commission's **Electronic Proposal Submission Service (EPSS)**. Proposals arriving at the Commission by any other means are regarded as 'not submitted', and will not be evaluated¹.

All the data that you upload is securely stored on a server to which only you and the other participants in the proposal have access until the deadline. This data is encrypted until the close of the call.

You can access the EPSS from the call page on CORDIS.

Full instructions are found in the "EPSS preparation and submission guide", available from the EPSS entry page (click on "EPSS user guide").

The most important points are explained below.

Use of the system by the proposal coordinator

As a coordinator you can:

- register as interested in submitting a proposal to a particular call
- set up (and modify) your consortium by adding/removing participants
- complete all of Part A of the proposal, pertaining to the proposal in general, and to your own administrative details
- download the document template for writing Part B of the proposal and, when it is completed, upload the finished Part B
- submit the complete proposal Part A and Part B.

Use of the system by the other participants

Other participants can:

- complete their own sections A2 (participant details)
- download the document template for writing Part B of the proposal, in order to assist the coordinator in preparing it (however, only the coordinator can upload the finished version)
- view the whole proposal.

Submitting the proposal

¹ In exceptional cases, when a proposal co-ordinator has absolutely no means of accessing the EPSS, and when it is impossible to arrange for another member of the consortium to do so, an applicant may request permission from the Commission to submit on paper. A request should be sent via the FP7 enquiry service (see annex 1), indicating in the subject line "Paper submission request". (You can telephone the enquiry service if web access is not possible: 00 800 6 7 8 9 10 11 from Europe; or 32 2 299 96 96 from anywhere in the world. A postal or e-mail address will then be given to you). Such a request, which must clearly explain the circumstances of the case, must be received by the Commission no later than one month before the call deadline. The Commission will reply within five working days of receipt. Only if a derogation is granted, a proposal on paper may be submitted by mail, courier or hand delivery. The delivery address will be given in the derogation letter.

Only the coordinator is authorised to submit the proposal.

Completing the Part A forms in the EPSS and uploading a Part B does **not** yet mean that your proposal is submitted. Once there is a consolidated version of the proposal, you must press the button "SUBMIT NOW".

(If you don't see the button "SUBMIT NOW", first select the "SUBMIT" tag at the top of the screen).

Please note that "SUBMIT NOW" starts the final steps for submission; it does not in itself cause the proposal to be submitted.

After reading the information page that then appears, it is possible to submit the proposal using the button marked "*Press this button to submit the proposal*".

The EPSS then performs an automatic validation of the proposal. A list of any problems ("validation error message") such as missing data, viruses, wrong file format or excessive file size will then appear on the screen. **Submission is blocked until these problems are corrected.** Once corrected, the coordinator must then repeat the above steps to achieve submission.

If successfully submitted, the coordinator receives a message that indicates that the proposal has been received. This automatic message is not the official acknowledgement of receipt (see Section 5).

The coordinator may continue to modify the proposal and submit revised versions overwriting the previous one right up until the deadline. The sequence above must be repeated each time.

If the submission sequence described above is not followed, the Commission considers that no proposal has been submitted.

For the proposal Part B you must use exclusively PDF ("portable document format", compatible with Adobe version 3 or higher, with embedded fonts). Other file formats will not be accepted by the system. Irrespective of any page limits specified in annex 4 to this Guide, there is an overall limit of 10Mbyte to the size of proposal file Part B. There are also restrictions to the name you give to the Part B file. You should only use alphanumeric characters. Special characters and spaces must be avoided.

You are advised to clean your document before converting to PDF (e.g. accept any track changes). Check that your conversion software successfully converts all pages and the original document (e.g. there is no problem with page limits).

Please note that the Commission prints out proposals on plain A4 paper. The printable zone on the print engine is bounded by 1.5 cm right, left, top bottom. No scaling is applied to make the page "fit" the window. Printing is done at 300 dots per inch.

About the deadline

Proposals must be submitted on or before the deadline specified in the Call fiche.

The EPSS will be closed for this call at the call deadline. After this moment, access to the EPSS for this call will be impossible.

Do not wait until the last moment before submitting your proposal!

Call deadlines are absolutely firm and are strictly enforced.

Please note that you may submit successive drafts of your proposal through the EPSS. Each successive submission overwrites the previous version. It is a good idea to **submit a draft well before the deadline**.

Leaving your first submission attempt to the last few minutes of the call will give you no time to overcome even the smallest technical difficulties, proposal verification problems or communications delays which may arise. Such events are never accepted as extenuating circumstances; your proposal will be regarded as not having been submitted.

Submission is deemed to occur at the moment when the proposal coordinator completes the submission sequence described above. It is not the point at which you start the upload. If you wait until too near to the close of the call to start uploading your proposal, there is a serious risk that you will not be able to submit in time.

If you have registered and submitted your proposal in error to another call which closes after this call, the Commission will not be aware of it until it is discovered among the downloaded proposals for the later call. It will therefore be classified as ineligible because of late arrival.

*The submission of a proposal requires some knowledge of the EPSS system, a detailed knowledge of the contents of the proposal and the authority to make last-minute decisions on behalf of the consortium if problems arise. **You are advised not to delegate the job of submitting your proposal!***

In the unlikely event of a failure of the EPSS service due to breakdown of the Commission server during the last 24 hours of this call, the deadline will be extended by a further 24 hours. This will be notified by e-mail to all proposal coordinators who had registered for this call by the time of the original deadline, and also by a notice on the Call page on CORDIS and on the web site of the EPSS.

Such a failure is a rare and exceptional event; therefore do not assume that there will be an extension to this call. If you have difficulty in submitting your proposal, you should not assume that it is because of a problem with the Commission server, since this is rarely the case. Contact the EPSS help desk if in doubt (see the address given in annex 1 to this Guide).

Please note that the Commission will not extend deadlines for system failures that are not its own responsibility. In all circumstances, you should aim to submit your proposal well before the deadline to have time to solve any problems.

Correcting or revising your proposal

Errors discovered in proposals submitted to the EPSS can be rectified by simply submitting a corrected version. So long as the call has not yet closed, the new submission will overwrite the old one.

Once the deadline has passed, however, the Commission can accept no further additions, corrections or re-submissions. The last eligible version of your proposal received before the deadline is the one which will be evaluated, and no later material can be submitted.

Ancillary material

Only a single PDF file comprising the complete Part B can be uploaded. Unless specified in the call, any hyperlinks to other documents, embedded material, and any other documents (company

brochures, supporting documentation, reports, audio, video, multimedia etc.) sent electronically or by post, will be disregarded.

Withdrawing a proposal

You may withdraw a proposal before the deadline by submitting a revised version with an empty Part B section, with the following words entered in the abstract field of form A:

"The applicants wish to withdraw this proposal. It should not be evaluated by the Commission".

If you wish to withdraw a proposal after the deadline, please contact the EPSS help desk.

4. Check list

Of importance for the consortium in general, but in particular for the coordinator:

4.1. Preparing your proposal

- **Does your planned work fit with the call for proposals?** Check that your proposed work does indeed address the topics open in this call. (See the current version of the work programme).
- **Are you applying for the right funding scheme?** Check that your proposed work falls within the scope of this call, and that you have applied for one of the eligible funding schemes (see the work programme). If there is a choice, have you opted for the one that best suits your needs?. Check the Part A and Part B formats shown in annexes 3 and 4 to this Guide¹
- **Is your proposal eligible?** The eligibility criteria are given in the work programme. See also annex 2 to this Guide. In particular, make sure that you satisfy the minimum requirements for the makeup of your consortium. Have any additional eligibility criteria been set for this call? Check that you comply with any budgetary limits that may have been fixed on the requested EU contribution. Any proposal not meeting the eligibility requirements will be considered ineligible and will not be evaluated.
- **Is your proposal complete?** Proposals must comprise a Part A, containing the administrative information including participant and project cost details on standard forms; and a Part B containing the scientific and technical description of your proposal as described in this Guide. A proposal that does not contain both parts will be considered ineligible and will not be evaluated.
- **Does your proposed work raise ethical issues?** Clearly indicate any potential ethical, safety or regulatory aspects of the proposed research and the way they will be dealt with in your proposed project. An ethical check will take place during the evaluation and an ethical review will take place for proposals dealing with sensitive issues. Proposals may be rejected on ethical grounds if such issues are not dealt with satisfactorily.
- **Does your proposal follow the required structure?** Proposals should be precise and concise, and must follow exactly the proposal structure described in this document (annex 4 to this Guide), which is designed to correspond to the evaluation criteria which will be applied. This structure varies for different funding schemes. Omitting requested information will almost certainly lead to lower scores and possible rejection.
- **Have you maximised your chances?** There will be strong competition. Therefore, edit your proposal tightly, strengthen or eliminate weak points. Put yourself in the place of an expert evaluator; refer to the evaluation criteria given in annex 2 to this Guide. Arrange for your draft to be evaluated by experienced colleagues; use their advice to improve it before submission.
- **Do you need further advice and support?** You are strongly advised to inform your National Contact Point of your intention to submit a proposal (see address in annex 1 to this Guide). Remember the Enquiry service listed in annex 1.

¹ If you have in error registered for the wrong call or funding scheme, discard that registration (usernames and passwords) and register again before the call deadline. If, after the close of the call, you discover that you have submitted your proposal to the wrong call, notify the EPSS Helpdesk.

4.2. Final checks before submission

- **Do you have the agreement** of all the members of the consortium to submit this proposal on their behalf?
- **Is your Part B in portable document format (PDF)**, including no material in other formats?
- **Is the filename made up of the letters A to Z, and numbers 0 to 9?** You should avoid special characters and spaces.
- **Have you printed out your Part B**, to check that it really is the file you intend to submit, and that it is complete, printable and readable? After the call deadline it will not be possible to replace your Part B file.
- **Is your Part B file within the size limit of 10 Mbytes?**
- **Have you virus-checked your computer?** The EPSS will automatically block the submission of any file containing a virus.

- **Have you made yourself familiar with the EPSS in good time?**
- **Have you allowed time to submit a first version of your proposal well in advance of the deadline** (at least several days before), and then to continue to improve it with regular resubmissions?
- **Have you completed the submission process for your latest version?**

4.3 Following submission

- Information submitted to the EPSS remains encrypted until the deadline and can only be viewed by the applicant.
- It is recommended that you check that all your material has been successfully been uploaded **and** submitted.
- You can revise and resubmit your proposal up to call deadline.

5. What happens next

Shortly after the call deadline, the Commission will send an **acknowledgement of receipt** to the e-mail address of the proposal coordinator given in the submitted proposal. This is assumed to be the individual named on the A2 form for participant no. 1. Please note that the brief electronic message given by the EPSS system after each submission is not the official acknowledgement of receipt.

The sending of an acknowledgement of receipt does not imply that a proposal has been accepted as eligible for evaluation.

If you have not received an acknowledgement of receipt within 12 working days after the call deadline (or cut-off date, in the case of a continuously open call), you should contact the FP7 Enquiry Service (see annex 1 to this Guide). However, first please check that you are the person named in the proposal as contact person for partner no. 1, check the email address which you gave for yourself, and check the junk mail box of your email system for the first few days following the close of call for any mail originating from FP7Aor@ess-fp7.org.

The Commission will check that your **proposal** meets the **eligibility criteria** that apply to this call and funding scheme (see the work programme and annex 2 to this Guide).

All eligible proposals will be evaluated by independent experts. The evaluation criteria and procedure are described in annex 2 to this Guide.

If **hearings** are planned in this call (see annex 2 to this Guide), you will receive an invitation if your proposal is highly rated. In this case, you will be asked by the evaluation panel to provide further details on the proposal. The letter of invitation will specify the date and time and the particular arrangements. It may also list a number of specific questions concerning the proposal, which you should be prepared to respond to at the hearing. The letter will explain how to reply if you cannot attend in person.

Soon after the completion of the evaluation, the results will be finalised and all co-ordinators will receive a letter containing **initial information** on the results of the evaluation, including the Evaluation Summary Report giving the opinion of the experts on the proposal. Even if the experts viewed your proposal favourably, the Commission cannot at this stage indicate if there is a possibility of EU funding.

If you have not received the "initial information letter" by the date referred to in annex 1 to this Guide, please contact the Commission via the FP7 enquiry service.

The letter will also give the relevant contact details and the steps to follow if you consider that there has been a shortcoming in the conduct of the evaluation process ("redress procedure").

The Commission also informs the relevant **programme committee**, consisting of delegates representing the governments of the Member States and Associated countries.

Based on the results of the evaluation by experts, the Commission draws up the final list of proposals for possible funding, taking account of the available budget. The Commission must also take account of the strategic objectives of the programme, as well as the overall balance of the proposals to be funded.

Official letters are then sent to the applicants. If all has gone well, this letter will mark the beginning of a **negotiation** phase. Due to budget constraints, it is also possible that your proposal will be placed on a reserve list. In this case, negotiations will only begin if funds become available. In other cases, the letter will explain the reasons why the proposal cannot be funded on this occasion.

A description of the negotiation process will be provided in the **Negotiation Guidance Notes** available on CORDIS.

Negotiations between the applicants and the Commission aim to conclude a grant agreement which provides for EU funding of the proposed work. They cover both the scientific/technological, and the administrative and financial aspects of the project. The officials conducting these negotiations on behalf of the Commission will be working within a predetermined budget envelope. They will also refer to any recommendations which the experts may have made concerning modifications to the work presented in the proposal, as well as any recommendations arising from an ethical review of your proposal if one was carried out. Where relevant, security aspects shall also be considered.

The negotiations will also deal with gender equality actions, and, if applicable to the project, with gender aspects in the conduct of the planned work, as well as the relevant principles contained in the European Charter for researchers and the Code of Conduct for their recruitment.

Members of the proposal consortium may be invited to Brussels or Luxembourg to facilitate the negotiation.

Glossary

The following explanations are provided for clarity and easy-reference. They have no legal authority, and do not replace any official definitions set out in the Council decisions.

A

Access costs:

Costs of providing access to research infrastructures

Acknowledgement of receipt : Applicants are informed by email shortly after the deadline that a proposal has been successfully submitted (but not that it is necessarily eligible). Contact the *help desk* urgently if you do not receive such an acknowledgement.

Applicant

The term used generally in this guide for a person or entity applying to a call for proposals. The term 'participant' is used in the more limited sense of a member of a proposal or project consortium (see below).

Associated countries

Non-EU countries which are party to an international agreement with the Community, under the terms or on the basis of which it makes a financial contribution to all or part of the Seventh Framework Programme. In the context of proposal consortia, organisations from these countries are treated on the same footing as those in the EU. The list of associated countries is given in the body of this guide.

C

Call fiche

The part of the work programme giving the basic data for a call for proposals (e.g. topics covered, budget, deadline etc). It is posted as a separate document on the CORDIS web page devoted to a particular call. Call for proposals (or "call")

An announcement, usually in the Official Journal, inviting proposals for research activities in a certain theme. Full information on the call can be found on the CORDIS web-site.

Consensus meeting

The stage in the proposal evaluation process when experts come together to establish a common view on a particular proposal.

Consortium

Most *funding schemes* require proposals from a number of participants (usually at least three) who agree to work together in a consortium.

Continuous submission

Some calls are open for an extended period, during which proposals may be submitted at any moment. In these cases, proposals are evaluated in batches after fixed *cut-off dates*.

Coordinator

The coordinator leads and represents the applicants. He or she acts as the point of contact with the Commission.

CORDIS service

A web service providing access to all the documentation related to FP7, and access to the *electronic proposal submission service*.

Cut-off date

An intermediate date in the context of a call operating a *continuous submission procedure*. Proposals are evaluated in batches after each *cut-off date*.

D**Deadline**

For a particular *call*, the moment after which proposals cannot be submitted to the Commission, and when the *Electronic Proposal Submission Service* closes for that call. Deadlines are strictly enforced.

Deliverable

A deliverable represents a verifiable output of the project. Normally, each workpackage will produce one or more deliverables during its lifetime. Deliverables are often written reports but can also take another form, for example the completion of a prototype etc.

Direct costs

Direct costs are all eligible costs which can be attributed directly to the project and are identified by the participant as such, in accordance with its accounting principles and its usual internal rules.

E**Electronic Proposal Submission Service (EPSS)**

A web-based service which must be used to submit proposals to the Commission. Access is given through the *CORDIS* web-site, or via a specific site.

Electronic Proposal Submission Service (EPSS) Helpdesk

A telephone / email service to assist applicants who have difficulty in submitting their proposal via the Electronic Proposal Submission System: tel: +32 2 233 3760 email support@epss-fp7.org

An internal committee which examines in detail cases of proposals whose eligibility for inclusion in an evaluation is in question

Eligibility criteria

The minimum conditions which a proposal must fulfil if it is to be retained for evaluation. The eligibility criteria are generally the same for all proposals throughout FP7, and relate to submission before the *deadline*, *minimum participation*, *completeness and scope*. However, additional eligibility criteria may apply to certain calls, and applicants should check the work programme, and annex 2 to this Guide.

Ethical issues table

Research activities supported by the Framework Programme should respect fundamental ethical principles. The main issues which might arise in a project are summarised in tabular form in a checklist included in the proposal

Evaluation criteria

The criteria against which eligible proposals are assessed by independent experts. The evaluation criteria are generally the same for all proposals throughout FP7, and relate to S/T quality, impact and

implementation. Relevance is also considered. However, additional evaluation criteria may apply to certain calls, and applicants should check the work programme, and annex 2 to this Guide.

Evaluation Summary Report (ESR)

The assessment of a particular proposal following the evaluation by independent experts is provided in an Evaluation Summary Report. It normally contains both comments and scores for each criterion.

F

FP7 enquiry service

A general information service on all aspects of FP7. Contact details are given in annex 1 to this Guide.

Funding scheme

The mechanisms for the Community funding of research projects. The funding schemes have different objectives, and are implemented through grant agreements.

G

Grant Agreement (GA)

The legal instrument that provides for Commission funding of successful proposals.

H

Hearing

Applicants whose proposals have been evaluated are sometimes invited to provide explanations and clarifications to any specific questions raised by the experts. These questions are submitted to the applicants in advance.

I

Indirect costs

Indirect costs, (sometimes called overheads), are all those eligible costs which cannot be identified by the participant as being directly attributed to the project, but which can be identified and justified by its accounting system as being incurred in direct relationship with the eligible direct costs attributed to the project.

Individual evaluation

The stage in the evaluation process when experts assess the merits of a particular proposal before discussion with their peers.

Information Days

Open events organised by the Commission to explain the characteristics of specific calls, and often as well, a chance for potential applicants to meet and discuss proposal ideas and collaborations.

Initial information letter

A letter sent by the Commission to applicants shortly after the evaluation by experts, giving a report from the experts on the proposal in question (the Evaluation Summary Report).

International Cooperation Partner Countries (ICPC)

A list of low-income, lower-middle income and upper-middle-income countries, given in annex 1 to the work programme. Organisations from these countries can participate and receive funding in FP7, providing that certain minimum conditions are met.

International European Interest Organisation

International organisations, the majority of whose members are European Union Member States or Associated Countries, and whose principal objective is to promote scientific and technological co-operation in Europe.

J**Joint Research Centre (JRC)**

The Commission's own research institutes.

L**Lump sum**

Lump sums do not require the submission of financial justifications (statements), as they are "fixed". ICPC participants when participating in an FP7 grant agreement (GA) have got the option between being reimbursed on the basis of eligible costs or on the basis of lump-sums. This option can be made (and changed) up to the moment of the signature of the GA. Once made, it will apply during the whole duration of the GA without the possibility of changing it. ICPC participants may opt for a lump sum in a given project and for reimbursement of costs in another. Whatever the final option chosen, the maximum EC contribution for the project will remain.

M**Milestones**

Control points where decisions are needed with regard to the next stage of the project.

N**National Contact Points (NCP)**

Official representatives nominated by the national authorities to provide tailored information and advice on each theme of FP7, in the national language(s).

Negotiation

The process of establishing a grant agreement between the Commission and an applicant whose proposal has been favourably evaluated, and when funds are available.

Non-profit

A legal entity is qualified as "*non-profit*" when considered as such by national or international law.

P**Part A**

The part of a proposal dealing with administrative data. This part is completed using the web-based EPSS.

Part B

The part of a proposal explaining the work to be carried out, and the roles and aptitudes of the participants in the consortium. This part is uploaded to the EPSS as a pdf file

Part B template

A document in PDF format supplied by the EPSS, consisting of a template of all chapter headings, forms and tables required to prepare a proposal Part B. The template format is given in Annex 4 to this Guide.

Participants

The members of a consortium in a proposal or project. These are legal entities, and have rights and obligations with regard to the Community.

Participant Identification Code (PIC)

Organisations participating in FP7 will progressively be assigned Participant Identification Codes (PIC). Possession of a PIC will enable organisations to take advantage of the Unique Registration Facility (see below).

Programme committee

A group of official national representatives who assist the Commission in implementing the Framework Programme.

Proposal

A description of the planned research activities, information on who will carry them out, how much they will cost, and how much funding is requested

Public body

Public body means any legal entity established as such by national law, and international organisations.

R**Redress procedure**

The initial information letter will indicate an address if an applicant wishes to submit a request for redress, if he or she believes that there have been shortcomings in the handling of the proposal in question, and that these shortcomings would jeopardise the outcome of the evaluation process. An internal evaluation review committee ("redress committee") will examine all such complaints. This committee does not itself evaluate the proposal. It is possible that the committee will recommend a re-evaluation of all or part of the proposal.

Research organisation

A legal entity established as a *non-profit* organisation which carries out research or technological development as one of its main objectives.

Reserve list

Due to budgetary constraints it may not be possible to support all proposals that have been evaluated positively. In such conditions, proposals on a reserve list may only be financed if funds become available following the negotiation of projects on the main list.

Risk-Sharing Finance Facility (RSFF)

A new mechanism to foster private sector investment in research, by increasing the capacity of the EIB and its financial partners to provide loans for European RTD projects.

RTD

Research and Technological Development.

S

SME

'SMEs' are micro, small and medium-sized enterprises. SMEs are defined in Recommendation 2003/361/EC of 6 May 2003.

Specific International Cooperation Actions (SICA)

In some calls on topics of mutual interest, special conditions apply to promote research collaborations between European organisations and those based in the International Cooperation Partner Countries (ICPC). This usually entails a minimum of two participants from EU or Associated countries, and two from ICPC.

T

Thresholds

For a proposal to be considered for funding, the evaluation scores for individual criteria must exceed certain thresholds. There is also an overall threshold for the sum of the scores.

Transitional flat rate

A 60% flat rate of the total direct costs (excluding the direct eligible costs for subcontracting and the costs of resources made available by third parties which are not used on the premises of the applicant) as indirect costs applying to grants awarded under calls for proposals closing before 1st January 2010. The 60% flat rate will apply for the whole duration of any grant agreement signed under any call closed before 1st January 2010 (**even if that grant agreement lasts beyond 2010**). After that date, this 60% flat rate will be revised.

Two-stage submission

Some calls require proposals to be submitted in two stages. In this case, applicants initially present their idea in a brief outline proposal. This is evaluated against evaluation criteria, or sub-criteria for this stage set out in the call. Applicants successful in the first stage will be invited to submit a full proposal at the second stage, which will be evaluated against criteria for this second stage set out in the call. The first stage criteria, as set out in the work programme, are usually a limited set of those applying at the second stage.

Two-step evaluation

An evaluation procedure in which a proposal is evaluated first on a limited number of evaluation criteria (usually, just one), and only those proposals which achieve the threshold on this are subject to a full evaluation on the remaining criteria.

U

Unique Registration Facility (URF)

A system that will allow organisations to register their details and status once and for all, obviating the need to provide the same information with each submission.

W

Weightings

The scores for certain evaluation criteria may be multiplied by a weighting factor before the total score is calculated. Generally, weightings are set to one; but there may be exceptions and applicants should check the details in annex 2 to this Guide.

Work Package

A work package is a major sub-division of the proposed project with a verifiable end-point – normally a deliverable or a milestone in the overall project.

Work Programme

A formal document of the Commission for the implementation of a specific programme, that sets out the research objectives and topics to be addressed. It also contains information that is set out further in this Guide, including the schedule and details of the calls for proposals, indicative budgets, and the evaluation procedure.

Annexes

- Annex 1 Timetable and specific information for this call
- Annex 2 Evaluation criteria and procedure
- Annex 3 Instructions for completing "Part A" of the proposal
- Annex 4 Instructions for drafting "Part B" of the proposal

Annex 1:

Timetable and specific information for this call

- The **work programme** provides the essential information for submitting a proposal to this call. It describes the content of the topics to be addressed, and details on how it will be implemented. The work programme is available on the CORDIS call page. The part giving the basic data on implementation (deadline, budget, additional conditions etc) is also posted as a separate document ("call fiche"). You must consult these documents.

- Indicative timetable for this call**

Publication of call	<i>30th November 2007</i>
Deadline for submission of proposals	<i>29th February 2008 17h00 Brussels time</i>
Evaluation of proposals	<i>Mid March 2008 to end of April 2008</i>
Evaluation Summary Reports sent to proposal coordinators ("initial information letter")	<i>Mid May 2008</i>
Invitation letter to successful coordinators to launch grant agreement negotiations with Commission services	<i>Early July 2008</i>
Letter to unsuccessful applicants	<i>From end 2008</i>
Signature of first grant agreements	<i>Last trimester 2008</i>

- Further information and help**

The CORDIS call page contains links to other sources that you may find useful in preparing and submitting your proposal. Direct links are also given where applicable.

Call information

CORDIS call page and work programme <http://cordis.europa.eu/fp7/dc/index.cfm>
Evaluation forms

Due to the unavailability of the EPSS service after the opening of the call, in order to help you to prepare your proposal, a word version of Annex 4 to this Guide will be available on the Research Infrastructures website on CORDIS at http://cordis.europa.eu/fp7/capacities/research-infrastructures_en.html

In order to help EC services to better prepare the evaluation, you are requested to submit a pre-notification of your intention to submit a proposal by sending an e-mail including , the acronym and the title of the

proposal, the name and country of coordinator and main partners as well as a short abstract of the proposal to the following dedicated e-mail address:

rtd-infra-notification@ec.europa.eu

General sources of help:

The Commission's FP7 Enquiry service <http://ec.europa.eu/research/enquiries>

National Contact Points <http://cordis.europa.eu/fp7/ncp.htm>

National Contact Points in third countries http://cordis.europa.eu/fp7/third-countries_en.html

Specialised and technical assistance:

CORDIS help desk http://cordis.europa.eu/guidance/helpdesk/home_en.html

EPSS Help desk support@epss-fp7.org

IPR help desk <http://www.ipr-helpdesk.org>

You may also wish to consult the following documents that can be found at
http://cordis.europa.eu/fp7/find-doc_en.html

FP7 Legal basis documents generally applicable

- Decision on the Framework Programme
- Rules for Participation
- Specific Programmes
- Work Programmes

Legal documents for implementation

- Rules for submission, evaluation, selection, award
- Standard model grant agreement
- Rules on verification of existence, legal status, operational and financial capacity

Guidance documents

- Guidance Notes on Audit Certification Guide for beneficiaries Guide to Financial Issues
- Guide to IPR
- Checklist for the Consortium Agreement
- Negotiation Guidance Notes and Templates for Description of Work

Other supporting information

- Brochure "The FP7 in Brief"
- European Charter for researchers and the Code of Conduct for their recruitment
- International cooperation
- Risk Sharing Financing Facility and the European Investment Bank

Ethics Review

- Ethics check list
- Supporting documents

Annex 2:

Evaluation criteria and procedures to be applied for this call

1. General

The evaluation of proposals is carried out by the Commission with the assistance of independent experts.

Commission staff ensures that the process is fair, and in line with the principles contained in the Commission's rules¹.

Experts perform evaluations on a personal basis, not as representatives of their employer, their country or any other entity. They are expected to be independent, impartial and objective, and to behave throughout in a professional manner. They sign an appointment letter, including a declaration of confidentiality and absence of conflict of interest before beginning their work. Confidentiality rules must be adhered to at all times, before, during and after the evaluation.

In addition, an independent expert will be appointed by the Commission to observe the evaluation process from the point of view of its working and execution. The role of the observer is to give independent advice to the Commission on the conduct and fairness of the evaluation sessions, on the way in which the experts apply the evaluation criteria, and on ways in which the procedures could be improved. The observer will not express views on the proposals under examination or the experts' opinions on the proposals.

2. Before the evaluation

On receipt by the Commission, proposals are registered and acknowledged and their contents entered into a database to support the evaluation process. Eligibility criteria for each proposal are also checked by Commission staff before the evaluation begins. Proposals which do not fulfil these criteria will not be included in the evaluation.

For this call a proposal will only be considered eligible if it meets all of the following conditions:

- It is received by the Commission before the deadline given in the call fiche
- It involves at least the minimum number of participants given in the call fiche
- It is complete (i.e. both the requested administrative forms and the proposal description are present)
- The content of the proposal relates to the topic(s) and funding scheme(s), including any special conditions set out in the relevant parts of the work programme

Where a maximum number of pages have been indicated for a section of the proposal, or for the proposal as a whole, the experts will be instructed to disregard any excess pages.

The Commission establishes a list of experts capable of evaluating the proposals that have been received. The list is drawn up to ensure:

¹ Rules for submission of proposals, and the related evaluation, selection and award procedures (posted on CORDIS).

- A high level of expertise;
- An appropriate range of competencies;

Provided that the above conditions can be satisfied, other factors are also taken into consideration:

- An appropriate balance between academic and industrial expertise and users;
- A reasonable gender balance;
- A reasonable distribution of geographical origins;
- Regular rotation of experts

In constituting the lists of experts, the Commission also takes account of their abilities to appreciate the industrial and/or societal dimension of the proposed work. Experts must also have the appropriate language skills required for the proposals to be evaluated.

Commission staff allocates proposals to individual experts, taking account of the fields of expertise of the experts, and avoiding conflicts of interest.

3. Evaluation of proposals

At the beginning of the evaluation, experts will be briefed by Commission staff, covering the evaluation procedure, the experts' responsibilities, the issues involved in the particular area/objective, and other relevant material (including the integration of the international cooperation dimension).

Each proposal will first be assessed independently by at least three experts.

The proposal will be evaluated against pre-determined evaluation criteria.

Evaluation criteria applicable to Integrating Activities		
S/T QUALITY	IMPLEMENTATION	IMPACT
“Scientific and/or technological excellence (relevant to the topics addressed by the call)”	“Quality and efficiency of the implementation and the management”	“Potential impact through the development, dissemination and use of project results”
<ul style="list-style-type: none"> • Soundness of concept and quality of objectives • Progress beyond the state-of-the-art • Quality and effectiveness of the methodology to achieve the objectives of the project, in particular the provision of integrated services. • Quality and effectiveness of the Networking Activities and associated work plan: The extent to which the co-ordination mechanisms will foster a culture of co-operation between the participants, and enhance the services to the users. • Quality and effectiveness of the Trans-national Access and/or Services, and associated work plan. The extent to which the activities will offer access to state-of-the-art infrastructures, high quality services, and will enable users to conduct high quality research. • Quality and effectiveness of the Joint Research Activities and associated work plan. The extent to which the activities will contribute to quantitative and qualitative improvements of the services provided by the infrastructures. 	<ul style="list-style-type: none"> • Appropriateness of the management structure and procedures. • Quality and relevant experience of the individual participants • Quality of the consortium as a whole (including complementarity, balance, critical mass). Appropriate allocation and justification of the resources to be committed (budget, staff, equipment), by work package and participant 	<ul style="list-style-type: none"> • Contribution at the European level towards structuring the European Research Area and optimising the use and development of the best research infrastructures existing in Europe. • Appropriateness of measures for the dissemination and/or exploitation of project results and knowledge, for the management of intellectual property and for spreading excellence

Evaluation scores will be awarded for each of the three criteria, and not for the sub-criteria. The sub-criteria are issues which the expert should consider in the assessment of that criterion. They also act as reminders of issues to raise later during the discussions of the proposal.

The relevance of a proposal will be considered in relation to the topic(s) of the work programme open in a given call, and to the objectives of a call. These aspects will be integrated in the application of the criterion "S/T quality", and the first sub-criterion under "Impact" respectively. When a proposal is partially relevant because it only marginally addresses the topic(s) of the call, or if only part of the proposal addresses the topic(s), this condition will be reflected in the scoring of the first criterion. Proposals that are clearly not relevant to a call ("out of scope") will be rejected on eligibility grounds.

Each criterion will be scored out of 5. Half marks can be given.

The scores indicate the following with respect to the criterion under examination:

- | | |
|-----|--|
| 0 - | <i>The proposal fails to address the criterion under examination or cannot be judged due to missing or incomplete information</i> |
| 1 - | <i>Very poor. The criterion is addressed in a cursory and unsatisfactory manner.</i> |
| 2 - | <i>Poor. There are serious inherent weaknesses in relation to the criterion in question.</i> |
| 3 - | <i>Fair. While the proposal broadly addresses the criterion, there are significant weaknesses that would need correcting.</i> |
| 4 - | <i>Good. The proposal addresses the criterion well, although certain improvements are possible.</i> |
| 5 - | <i>Excellent. The proposal successfully addresses all relevant aspects of the criterion in question. Any shortcomings are minor.</i> |

No weightings will be applied

Thresholds will be applied to the scores. The threshold for individual criteria will be 3. The overall threshold, applying to the sum of the three individual scores, will be 10.

Examples of the evaluation forms and reports that will be used by the experts in this call will be made available on CORDIS.

Conflicts of interest: Under the terms of the appointment letter, experts must declare beforehand any known conflicts of interest, and must immediately inform a Commission staff member if one becomes apparent during the course of the evaluation. The Commission will take whatever action is necessary to remove any conflict.

Confidentiality: The appointment letter also requires experts to maintain strict confidentiality with respect to the whole evaluation process. They must follow any instruction given by the Commission to ensure this. Under no circumstance may an expert attempt to contact an applicant on his own account, either during the evaluation or afterwards.

4. Individual evaluation

This part of the evaluation will be carried out on the premises of the experts concerned ("remotely").

At this first step the experts are acting individually; they do not discuss the proposal with each other, nor with any third party. The experts record their individual opinions in an Individual Evaluation Report (IER), giving scores and also comments against the evaluation criteria.

When scoring proposals, experts must *only* apply the above evaluation criteria.

Experts will assess and mark the proposal exactly as it is described and presented. They do not make any assumptions or interpretations about the project in addition to what is in the proposal.

Concise but explicit justifications will be given for each score. Recommendations for improvements to be discussed as part of a possible negotiation phase will be given, if needed.

The experts will also indicate whether, in their view, the proposal deals with sensitive ethical issues.

Signature of the IER also entails a declaration that the expert has no conflict of interest in evaluating the particular proposal.

Scope of the call: It is possible that a proposal is found to be completely out of scope of the call during the course of the individual evaluation, and therefore not relevant. If an expert suspects that this may be the case, a Commission staff member will be informed immediately, and the views of the other experts will be sought.

If the consensus view is that the main part of the proposal is not relevant to the topics of the call, the proposal will be withdrawn from the evaluation, and the proposal will be deemed ineligible.

5. Consensus meeting

Once all the experts to whom a proposal has been assigned have completed their IER, the evaluation progresses to a consensus assessment, representing their common views.

This entails a consensus meeting to discuss the scores awarded and to prepare comments.

The consensus discussion is moderated by a representative of the Commission. The role of the moderator is to seek to arrive at a consensus between the individual views of experts without any prejudice for or against particular proposals or the organisations involved, and to ensure a confidential, fair and equitable evaluation of each proposal according to the required evaluation criteria.

The moderator for the group may designate an expert to be responsible for drafting the consensus report ("rapporteur"). The experts attempt to agree on a consensus score for each of the criteria that have been evaluated and suitable comments to justify the scores. Comments should be suitable for feedback to the proposal coordinator. Scores and comments are set out in a consensus report. They also come to a common view on the questions of scope and ethics

If during the consensus discussion it is found to be impossible to bring all the experts to a common point of view on any particular aspect of the proposal, the Commission may ask up to three additional experts to examine the proposal.

Ethical issues: If one or more experts have noted that there are ethical issues touched on by the proposal, the relevant box on the consensus report (CR) will be ticked and an Ethical Issues Report (EIR) completed, stating the nature of the ethical issues. Exceptionally for this issue, no consensus is required.

Outcome of consensus

The outcome of the consensus step is the consensus report. This will be signed/approved (either on paper, or electronically) by all experts, or as a minimum, by the "rapporteur" and the moderator. The moderator is responsible for ensuring that the consensus report reflects the consensus reached, expressed in scores and comments. In the case that it is impossible to reach a consensus, the report sets out the majority view of the experts but also records any dissenting views.

The Commission will take the necessary steps to assure the quality of the consensus reports, with particular attention given to clarity, consistency, and appropriate level of detail. If important changes are necessary, the reports will be referred back to the experts concerned.

The signing of the consensus report completes the consensus step.

Evaluation of a resubmitted proposal

In the case of proposals that have been submitted previously to the Commission, the moderator gives the experts the previous evaluation summary report (see below) at the consensus stage. If necessary, the experts will be required to provide a clear justification for their scores and comments should these differ markedly from those awarded to the earlier proposal.

6. Panel review

This is the final step involving the independent experts (no hearings are foreseen under this call). It allows them to formulate their recommendations to the Commission having had an overview of the results of the consensus step.

The main task of the panel is to examine and compare the consensus reports in a given area, to check on the consistency of the marks applied during the consensus discussions and, where necessary, propose a new set of scores.

One panel will cover the whole call

The tasks of the panel will also include:

- reviewing cases where a minority view was recorded in the consensus report
- recommending a priority order for proposals with the same consensus score;
- making recommendations on possible clustering or combination of proposals.

The panel is chaired by an expert appointed by the Commission. The Commission will ensure fair and equal treatment of the proposals in the panel discussions. The chairperson will also act as panel rapporteur.

The outcome of the panel meeting is a report recording, principally:

- An evaluation summary report (ESR) for each proposal, including, where relevant, a report of any ethical issues raised and any security considerations;
- A list of proposals passing all thresholds, along with a final score for each proposal passing the thresholds and the panel recommendations for priority order.
- A list of evaluated proposals having failed one or more thresholds;
- A list of any proposals having been found ineligible during the evaluation by experts;
- A summary of any deliberations of the panel;

Since the same panel has considered proposals submitted to various parts of a call (for example different funding schemes, or different topics that have been allocated distinct indicative budgets in the work programme), the report may contain multiple lists accordingly

The panel report is signed by at least three panel experts, and the chairperson.

A further special ethical review of above-threshold proposals may be organised by the Commission.

Annex 3

Instructions for completing "Part A" of the proposal

Please be aware that, for maintenance reasons, the EPSS application will not be available during December 2007, until mid January 2008. Submission will not be possible during this time. The exact downtime will be indicated on the EPSS website.

Proposals in this call must be submitted electronically, using the Commission's Electronic Proposal Submission System (EPSS). The procedure is given in section 3 of this guide.

In Part A you will be asked for certain administrative details that will be used in the evaluation and further processing of your proposal. Part A forms an integral part of your proposal. Details of the work you intend to carry out will be described in Part B (annex 4).

Section A1 gives a snapshot of your proposal, section A2 concerns you and your organisation, while section A3 deals with money matters.

Please note:

- The coordinator fills in sections A1 and A3.
- The participants already identified at the time of proposal submission (including the coordinator) each fill in their respective section A2.
- Subcontractors shall not fill in section A2 and should not be listed separately in section A3.
- The estimated budget planned for any future participants (not yet identified at the time of the proposal) is not shown separately in form A3 but should be added to the coordinator's budget. Their role, profile and tasks are described in Part B of the proposal.

Check that your budget figures are correctly entered in Part A. Make sure that:

- *Numbers are always rounded to the nearest whole number*
- *All costs are given in Euros. Do not express your costs in thousands of Euros ("KEUROS") etc. This can affect decisions on the eligibility of your proposal*
- *You have inserted zeros ("0") if there are no costs, or if no funding is requested. Do not leave blanks*
- *Costs do not include value added tax.*

Note:

The following notes are for information only. They should assist you in completing Part A of your proposal. On-line guidance will also be available. The precise questions and options presented on EPSS may differ slightly from these below.

COMBINATION OF COLLABORATIVE PROJECT AND COORDINATION AND SUPPORT ACTION

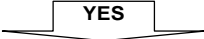
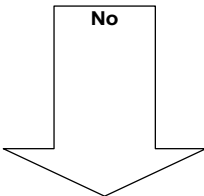
Section A1: Summary	
Proposal Acronym	<p>The short title or acronym will be used to identify your proposal efficiently in this call. It should be of <u>no more than 20 characters</u> (use standard alphabet and numbers only; no symbols or special characters please).</p> <p>The same acronym should appear on each page of Part B of your proposal.</p>
Proposal Title	<p>The title should be <u>no longer than 200 characters</u> and should be understandable to the non-specialist in your field.</p>
Duration in months	<p>Insert the estimated duration of the project in full months.</p>
Call (part) identifier	<p>[pre-filled]</p> <p>The call identifier is the reference number given in the call or part of the call you are addressing, as indicated in the publication of the call in the Official Journal of the European Union, and on the CORDIS call page. A call identifier looks like this: <i>FP7-KBBE-2008-1</i></p>
Topic code(s) most relevant to your proposal	<p>Please refer to the topic codes /objectives listed in the work programme call fiche.</p> <p>All activities and topics of FP7 have been assigned unique codes, which are used in the processing of data on proposals and subsequent contracts. The codes are organised hierarchically.</p> <p>The choice of the first topic code will be limited in the drop-down menu to one of the topics open in this call. Select the code corresponding to the topic most relevant to your proposal.</p> <p>The choice for the second code is also limited to topics open in the call in question. Enter a second code if your proposal also addresses another of these. Select 'none' if this is not the case.</p> <p>Select a third code if your proposal is also relevant to another theme. This time, the available codes will simply correspond to broad themes. Select 'none' if this is not the case.</p>
Free Keywords	<p>Please enter a number of keywords that you consider sufficient to characterise the scope of your proposal.</p> <p>There is <u>a limit of 100 characters</u>.</p>
Abstract	<p>The abstract should, at a glance, provide the reader with a clear understanding of the objectives of the proposal, how they will be achieved, and their relevance to the Work Programme. This summary will be used as the short description of the proposal in the evaluation process and in communications to the programme management committees and other interested parties. It must therefore be short and precise and should not contain confidential information. Please use plain typed text, avoiding formulae and other special characters. If the proposal is written in a language other than English, please include an English version of the proposal abstract in Part B.</p> <p>There is <u>a limit of 2000 characters</u>.</p>
Similar proposals or signed contracts	<p>A 'similar' proposal or contract is one that differs from the current one in minor ways, and in which some of the present consortium members are involved.</p>

Section A2/ Participants	
Participant number	The number allocated by the consortium to the participant for this proposal. The co-ordinator of a proposal is always number one .
Participant Identification Code	The Participant Identification Code (PIC) will enable organisations to take advantage of the Unique Registration Facility. The allocation of PICs will be done progressively, starting with larger organisations. It is expected that the PIC field will be implemented in the EPSS during Spring 2008. An announcement will be made on CORDIS when this possibility becomes available. From then on, organisations who have received a PIC from the Commission are encouraged to use it when submitting proposals.
Legal name	<p>For Public Law Body, it is the name under which your organisation is registered in the Resolution text, Law, Decree/Decision establishing the Public Entity, or in any other document established at the constitution of the Public Law Body;</p> <p>For Private Law Body, it is the name under which your organisation is registered in the national Official Journal (or equivalent) or in the national company register.</p> <p>For a natural person, it is for e.g. Mr Adam JOHNSON, Mrs Anna KUZARA, and Ms Alicia DUPONT.</p>
Organisation Short Name	<p>Choose an abbreviation of your Organisation Legal Name, only for use in this proposal and in all relating documents.</p> <p>This short name should not be more <u>than 20 characters</u> exclusive of special characters (./:…), for e.g. CNRS and not C.N.R.S. It should be preferably the one as commonly used, for e.g. IBM and not Int.Bus.Mac.</p>
Legal address	<p>For Public and Private Law Bodies, it is the address of the entity's Head Office.</p> <p>For Individuals it is the Official Address.</p> <p>If your address is specified by an indicator of location other than a street name and number, please insert this instead under the "street name" field and "N/A" under the "number" field.</p>
Non-profit organisation	Non-profit organisation is a legal entity qualified as such when it is recognised by national or, international law.
Public body	Public body means any legal entity established as such by national law, and international organisations.
Research organisation	Research organisation means a legal entity established as a non-profit organisation which carries out research or technological development as one of its main objectives.
NACE code	<p>NACE means "<u>Nomenclature des Activités économiques dans la Communauté Européenne</u>".</p> <p>Please select one activity from the list that best describes your professional and economic ventures. If you are involved in more than one economic activity, please select the one activity that is most relevant in the context of your contribution to the proposed project. For more information on the methodology, structure and full content of NACE (rev. 1.1) classification please consult EUROSTAT at:</p> <p>http://ec.europa.eu/eurostat/ramon/nomenclatures/index.cfm?TargetUrl=LST_CLS_DLD&StrNom=NACE_1_1&StrLanguageCode=EN&StrLayoutCode=HIERARCHIC .</p>
Small and Medium-Sized	<p>SMEs are micro, small and medium-sized enterprises within the meaning of Recommendation 2003/361/EC in the version of 6 May 2003. The full definition and a guidance booklet can be found at http://ec.europa.eu/enterprise/enterprise_policy/sme_definition/index_en.htm</p> <p>To find out if your organisation corresponds to the definition of an SME you can use the on-line tool at</p>

Enterprises (SMEs)	http://ec.europa.eu/research/sme-techweb/index_en.cfm
Dependencies with (an) other participant(s)	<p>Two participants (legal entities) are dependent on each other where there is a controlling relationship between them:</p> <ul style="list-style-type: none"> – A legal entity is under the same direct or indirect control as another legal entity (SG); or – A legal entity directly or indirectly controls another legal entity (CLS); or – A legal entity is directly or indirectly controlled by another legal entity (CLB). <p>Control: Legal entity A controls legal entity B if:</p> <ul style="list-style-type: none"> – A, directly or indirectly, holds more than 50% of the nominal value of the issued share capital or a majority of the voting rights of the shareholders or associates of B, or – A, directly or indirectly, holds in fact or in law the decision-making powers in B. <p>The following relationships between legal entities shall not in themselves be deemed to constitute controlling relationships:</p> <p>(a) the same public investment corporation, institutional investor or venture-capital company has a direct or indirect holding of more than 50 % of the nominal value of the issued share capital or a majority of voting rights of the shareholders or associates;</p> <p>(b) the legal entities concerned are owned or supervised by the same public body.</p>
Character of dependence	<p>According to the explanation above mentioned, please insert the appropriate abbreviation according to the list below to characterise the relation between your organisation and the other participant(s) you are related with:</p> <ul style="list-style-type: none"> • SG: Same group: if your organisation and the other participant are controlled by the same third party; • CLS: Controls: if your organisation controls the other participant; • CLB: Controlled by: if your organisation is controlled by the other participant.
Contact point	It is the main scientist or team leader in charge of the proposal for the participant. For participant number 1 (the coordinator), this will be the person the Commission will contact concerning this proposal (e.g. for additional information, invitation to hearings, sending of evaluation results, convocation to negotiations).
Title	Please choose one of the following: Prof., Dr., Mr., Mrs, Ms.
Sex	This information is required for statistical and mailing purposes. Indicate F or M as appropriate.
Phone and fax numbers	Please insert the full numbers including country and city/area code. Example +32-2-2991111.
Section A3/Budget	
Indirect Costs	Indirect costs are all those eligible costs which cannot be identified by the participant as being directly attributed to the project but which can be identified and justified by its accounting system as being incurred in direct relationship with the eligible direct costs attributed to the project. They may not include any eligible direct costs.

<p>Method of calculating indirect costs</p>	<p>In an Integrating Activity, the indirect costs must be calculated according to the chosen method as described below. However for Coordination and support activities, the reimbursement of indirect eligible costs (included in the EC requested contribution) may not exceed 7% of the direct eligible costs, excluding subcontracting, access cost and the costs of reimbursement of resources made available by third parties which are not used on the premises of the beneficiary.</p> <p>Summary description (as displayed on EPSS)</p> <ul style="list-style-type: none"> • Participants who have an analytical accounting system that can identify and group their indirect costs in accordance with the eligibility criteria (e.g. exclude non-eligible costs) must report their actual indirect costs (or choose the 20% flat rate option referred to below). • For the purpose of calculating the actual indirect costs, a participant is allowed to use a simplified method of calculation of its full indirect eligible costs. • Optionally, participants may opt for a flat rate for indirect costs of 20% of the direct costs (minus subcontracting and third party costs not incurred on the premises of the participant). • A specific flat rate of 60% of the direct costs is foreseen for non-profit public bodies, secondary and higher education establishments, research organisations and SMEs which are unable to identify with certainty their real indirect costs for the project. The 60% flat rate will apply for grants awarded under calls for proposals closing before 1st January 2010; for grants awarded under calls closing after 31 December 2009, an appropriate level of flat rate which should be an approximation of the real indirect costs concerned but not lower than 40% of the direct costs will apply. <p>Further guidance</p> <p>In FP7 all departments, faculties or institutes which are part of the same legal entity must use the same system of cost calculation (unless a special clause foreseeing a derogation for a particular department/institute is included in the grant agreement). Under FP7, there are no cost reporting models.</p> <p>1. Participants which have an analytical accounting system that can identify and group their indirect costs (pool of costs) in accordance with the eligibility criteria (e.g. exclude non-eligible costs) must report their actual indirect costs (or choose the 20% flat rate option under 2. below). This method is the same as the "full cost" model used in previous Framework Programmes..</p> <p>For the purpose of calculating the actual indirect costs, a participant is allowed to use a simplified method of calculation of its full indirect eligible costs. The simplified method is a way of declaring indirect costs which applies to organisations which do not aggregate their indirect costs at a detailed level (centre, department), but can aggregate their indirect costs at the level of the legal entity.</p> <p>The simplified method can be used if the organisation does not have an accounting system with a detailed cost allocation. The method has to be in accordance with their usual accounting and management principles and practices; it does not involve necessarily the introduction of a new method just for FP7 purposes. Participants are allowed to use it, provided this simplified approach is based on actual costs derived from the financial accounts of the last closed accounting year.</p> <p>There is no "standard model"; each legal entity will use its own system. The minimum requirements for it to be considered a simplified method for FP7 purposes are the following:</p> <ul style="list-style-type: none"> - the system must allow the participant to identify and remove its direct ineligible costs (VAT, etc.); - it must at least allow for the allocation of the overheads at the level of the legal entity to the individual projects by using a fair "driver" (e.g. total productive hours); - the system applied and the costs declared according to it should follow the normal accounting principles and practices of the participant. Therefore, if the system used by a participant is more "refined" than the "minimum" requirements mentioned here, it is that system which should be used when declaring costs. <p><i>Example: if a participant's accounting system distinguishes between different overheads rates according to the type of activity (research, teaching...), then the overheads declared in an FP7 grant agreement should follow this practice and refer only to the concerned activities (research, demonstration...)</i></p> <p>The simplified method does not require previous registration or certification by the Commission.</p> <p>2. Optionally, participants may opt to declare their actual direct costs plus a flat rate for indirect costs of 20% of the direct costs (minus subcontracting and third party costs not incurred on the premises of the participant). This flat rate is open to any participant whatever the accounting system it uses. Accordingly, when this option is chosen, there is no need for certification of the indirect costs, only of the direct ones.</p> <p>3. Also, a transitional flat rate is foreseen for certain types of organisations. This flat rate is called a "transitional flat rate" because it will apply to grants awarded under calls for proposals closing before 1st January 2010. This means that the 60% flat rate will apply for the whole duration of any grant agreement signed under any call closed before 1st</p>
--	---

	<p>January 2010 (even if that grant agreement lasts beyond 2010). The objective is to help the organisations during the transition from a flat rate calculation of their overheads (organisations using the "additional cost" cost basis in previous Framework Programmes) to an actual cost calculation. After that date, this 60% flat rate will be revised, the Commission shall establish an appropriate level of flat rate which should be an approximation of the real indirect costs concerned but not lower than 40%. At that moment, a special clause will be adopted and inserted in subsequent grant agreement. The use of this flat rate is subject to three cumulative conditions :</p> <p>(i) Status of the organisation</p> <p>The flat rate is reserved to:</p> <ul style="list-style-type: none"> - non-profit public bodies - secondary and higher education establishments - research organisations - SMEs <p>If these participants change their status during the life of the project, <i>"this flat rate shall be applicable up to the moment they lose their status"</i>. Therefore, from that moment on, they will not be able to use the 60% flat rate in subsequent financial statements. From then on, the indirect costs will have to be declared either on the basis of actual costs or using the 20% flat rate choice for indirect costs.</p> <p>(ii) Accounting system of the organisation</p> <p>The flat rate is foreseen for the organisations which are unable to identify with certainty their real indirect costs for the project. How will it be proved that an organisation is unable to identify with certainty their real indirect costs for the project? The participant (for example, an SME) does not have to change its accounting system or its usual accounting principles. If its accounting system can identify overall overheads but does not allocate them to project costs, then the participant can use this flat rate if the other conditions are fulfilled.</p> <p><i>Example:</i> <i>A University, which in FP6 has used the "additional cost" basis because its accounting system did not allow for the share of their direct and indirect costs to the project to be distinguished may under FP7:</i></p> <ul style="list-style-type: none"> - either opt for the 60% flat rate, knowing that it will be revised at the end of 2009, or - introduce a cost accounting system "simplified method" by which a basic allocation per project of the overhead costs of the legal entity will be established, or - introduce a full analytical accounting system. <p>Following this, an organisation which used the "full cost" model under the Sixth Framework Programme is presumed to be in a situation to be able to identify the real indirect costs and allocate them to the projects. Accordingly, this organisation would not in principle be able to opt for the 60% flat rate for FP7.</p> <p>An organisation which can identify the real indirect costs but does not have a system to allocate these indirect costs can opt for this 60% flat rate. The choice of this transitional flat rate lies within the responsibility of the participant. If a subsequent audit shows that the above-mentioned cumulative conditions are not fulfilled, all projects where this participant is involved might be reviewed.</p> <p>(iii) Type of funding scheme</p> <p>The flat rate is reserved to funding schemes which include research and technological development and demonstration activities: Network of Excellence, Collaborative projects (including research for the benefit of specific groups – in particular SMEs) and combinations of funding schemes including one of these two. The basis for the calculation of the flat rate excludes the costs for subcontracting and the costs of resources made available by third parties which are not used on the premises of the participant because in these two cases, the indirect costs are not incurred by the participant but by the subcontractor or the third party. When a participant opts for the transitional flat rate of 60 % for its first participation under FP7 it can opt afterwards for the actual indirect costs system for subsequent participations. This change does not affect previous grant agreement. After this change, this organisation cannot opt again for a flat rate system (either 60% or 20% flat rate).</p>
--	---

	<div style="text-align: center; background-color: #000080; color: white; padding: 5px; border: 1px solid black;">Indirect Costs - Decision Tree</div> <div style="border: 1px solid black; padding: 5px; margin-top: 10px;"> <p>Do either of these conditions apply? (1) your organisation possesses an analytical accounting system, or (2) you will declare overhead rates using a simplified method</p> </div> <div style="display: flex; justify-content: space-around; margin-top: 20px;"> <div style="text-align: center;"> <p>YES</p>  </div> <div style="text-align: center;"> <p>No</p>  </div> </div> <div style="display: flex; justify-content: space-between; margin-top: 20px;"> <div style="border: 1px solid black; padding: 5px; width: 45%;"> <p>Real indirect costs or costs calculated using a simplified method</p> </div> <div style="border: 1px solid black; padding: 5px; width: 45%; text-align: center;"> <p>or</p> </div> </div> <div style="border: 1px solid black; padding: 5px; margin-top: 10px; text-align: center;"> <p>20% of total direct eligible costs (1)</p> </div> <div style="display: flex; justify-content: space-between; margin-top: 10px;"> <div style="border: 1px solid black; padding: 5px; width: 45%; text-align: center;"> <p>or</p> </div> <div style="border: 1px solid black; padding: 5px; width: 45%;"> <p>60% of total direct eligible costs (1)(2), for :</p> <ul style="list-style-type: none"> - Non-profit public bodies, secondary and higher education establishments, research organisations and SMEs - When participating in funding schemes which include research and technological development </div> </div> <div style="border: 1px solid black; padding: 5px; margin-top: 20px; text-align: center;"> <p>Coordination and support actions : In any case Maximum 7% of the direct eligible costs (1)</p> </div> <p style="font-size: small; margin-top: 20px;">(1) excluding direct eligible costs for subcontracting and the costs of reimbursement of resources made available by third parties which are not used on the premises of the beneficiary</p> <p style="font-size: small;">(2): This flat rate can be used for any proposal submitted under calls for proposals closing before 1 January 2010. The Commission shall establish for grants awarded under calls closing after 31 December 2009, an appropriate level of flat rate which should</p>
<p>International Cooperation Partner Country (ICPC)</p>	<p>International Cooperation Partner Country means a third country which the Commission classifies as a low-income, lower-middle income or upper-middle-income country and which is identified as such in Annex I to the work programmes.</p>
<p>Lump sum funding method</p>	<p>Legal entities established in an ICPC may opt for lump sums. In that case the contribution is based on the amounts shown below, multiplied by the total number of person-years for the project requested by the ICPC legal entity.</p> <ul style="list-style-type: none"> • Low-income ICPC: 8,000 Euro/researcher/year • Lower middle income ICPC: 9,800 Euro/researcher/year • Upper middle income ICPC 20,700 Euro/researcher/year <p>The maximum EC contribution is calculated by applying the normal upper funding limits shown under "requested EC contribution". This amount is all inclusive, covering support towards both the direct and the indirect costs.</p> <p>More information on ICPC lump sums can be found in the section II.18 of the "Guide to financial issues" http://cordis.europa.eu/fp7/find-doc_en.html</p>

<p>Type of Activity</p>	<ul style="list-style-type: none"> • RTD activities means for Integrating activities: Joint Research Activities as defined in section 2.2 of this guide • Coordination activities means for Integrating Activities: Networking Activities as defined in section 2.2 of this guide • Support Activities means for Integrating Activities: <u>Transnational Access Activities or Services activities as defined in section 2.2 of this guide</u> • Other activities not to be used for Integrating Activities. • Management activities include the maintenance of the consortium agreement, if it is obligatory, the overall legal, ethical, financial and administrative management including for each of the participants obtaining the certificates on the financial statements or on the methodology, the implementation of competitive calls by the consortium for the participation of new participants and, any other management activities foreseen in the proposal except coordination of research and technological development activities.
<p>Personnel costs</p>	<p>Personnel costs are only the costs of the actual hours worked by the persons directly carrying out work under the project and shall reflect the total remuneration: salaries plus social security charges (holiday pay, pension contribution, health insurance, etc.) and other statutory costs included in the remuneration. Such persons must:</p> <ul style="list-style-type: none"> – be directly hired by the participant in accordance with its national legislation, – be working under the sole technical supervision and responsibility of the latter, and – be remunerated in accordance with the normal practices of the participant. <p>Participants may opt to declare average personnel costs if certified in accordance with a methodology approved by the Commission and consistent with the management principles and usual accounting practices of the participant. Average personnel costs charged by a participant having provided a certification on the methodology are deemed not to significantly differ from actual personnel costs.</p>
<p>Sub-contracting</p>	<p>A subcontractor is a third party which has entered into an agreement on business conditions with one or more participants, in order to carry out part of the work of the project without the direct supervision of the participant and without a relationship of subordination.</p> <p>Where it is necessary for the participants to subcontract certain elements of the work to be carried out, the following conditions must be fulfilled:</p> <ul style="list-style-type: none"> - subcontracts may only cover the execution of a limited part of the project; - recourse to the award of subcontracts must be duly justified in Part B of the proposal having regard to the nature of the project and what is necessary for its implementation; - recourse to the award of subcontract by a participant may not affect the rights and obligations of the participants regarding background and foreground; - - Part B of the proposal must indicate the task to be subcontracted and an estimation of the costs; <p>Any subcontract, the costs of which are to be claimed as an eligible cost, must be awarded according to the principles of best value for money (best price-quality ratio), transparency and equal treatment. Framework contracts between a participant and a subcontractor, entered into prior to the beginning of the project that are according to the participant's usual management principles may also be accepted.</p> <p>Participants may use external support services for assistance with minor tasks that do not represent per se project tasks as identified in Part B of the proposal.</p>
<p>Other direct costs</p>	<p>Means direct costs not covered by the above mentioned categories of costs.</p>

Access costs	<p>For Transnational Access Activities: it means the amount which results from multiplying a unit cost by the quantity of access provided. In the case where a participant is giving access to more than one infrastructure/installation with different unit costs, it means the sum of all the amounts obtained from the individual access costs calculation (see Annex III for Research Infrastructures to the Grant Agreement - Specific Provisions for Transnational Access Activities)</p> <p>For Services Activities, it means a maximum of 20% of the operating costs.(see Special Clause n°17 to the FP7 Grant Agreement)</p>
---------------------	---

Total Budget	<p><i>Note: The "total budget" is not the requested EC contribution.</i></p> <p>A sum of all the eligible costs, under the respective types of activity.</p>
Requested EC contribution	<p>The requested EC contribution shall be determined by applying the upper funding limits indicated below, per activity and per participant to the costs accepted by the Commission, or to the flat rates or lump sums.</p> <p>Maximum reimbursement rates of eligible costs</p> <ul style="list-style-type: none"> • Research and technological development = 50% or 75%* • Support activities = 100% • Coordination activities = 100% • Management = 100% <p>(*) For participants that are non profit public bodies, secondary and higher education establishments, research organisations and SMEs.</p>
Total Receipts	<p><i>Note: The term "receipts" is not the requested EC contribution.</i></p> <p>Receipts of the project may arise from:</p> <p>a) Financial transfers or contributions in kind free of charge to the participant from third parties:</p> <ol style="list-style-type: none"> i. shall be considered a receipt of the project if they have been contributed by the third party specifically to be used on the project. ii. shall <u>not</u> be considered a receipt of the project if their use is at the management discretion of the participant. <p>b) Income generated by the project:</p> <ol style="list-style-type: none"> i. shall be considered receipts for the participant when generated by actions undertaken in carrying out the project and from the sale of assets purchased under the grant agreement up to the value of the cost initially charged to the project by the participant; ii. shall <u>not</u> be considered a receipt for the participant when generated from the use of foreground resulting from the project. <p>The Community financial contribution may not have the purpose or effect of producing a profit for the participants. For this reason, the total requested EC funding plus receipts cannot exceed the total eligible costs.</p>

Annex 4

Instructions for drafting "Part B" of the proposal

Combination of Collaborative Project and Coordination and Support Action for Integrating Activities

A description of this funding scheme is given in section 2 of this Guide for Applicants. Please examine this carefully before preparing your proposal.

This annex provides a template to help you structure your proposal. It will help you present important aspects of your planned work in a way that will enable the experts to make an effective assessment against the evaluation criteria (see annex 2). Sections 1, 2 and 3 each correspond to an evaluation criterion. The sub-sections (1.1, 1.2 etc.) correspond to the sub-criteria.

Page limits: remember to keep to maximum page lengths where these are specified.

The minimum font size allowed is 11 points. All margins (top, bottom, left, right) should be at least 15 mm (not including any footers or headers).

The Commission may instruct the experts to disregard any excess pages.

Even where no page limits are given, or where limits are only recommended, it is in your interest to keep your text concise since over-long proposals are rarely viewed in a positive light by experts.

Cover Page

Proposal full title:

Proposal acronym:

Type of funding scheme:

Combination of Collaborative Project and Coordination and Support Action for Integrating Activities

Work programme topics addressed:

(if more than one, indicate their order of importance to the project)

Name of the coordinating person:

List of participants:

Participant no. *	Participant organisation name	Country
1 (Coordinator)		
2		
3		

* Please use the same participant numbering as that used in section A2 of the administrative forms

Table of Contents

Proposal

1: Scientific and/or technical quality, relevant to the topics addressed by the call

1.1 Concept and objectives (*maximum length: 2 pages*).

Explain the concept of your project. What are the main ideas that led you to propose this work?

Describe in detail the overall objectives of the Integrating Activity. Show how they relate to the topics addressed by the call, which you should explicitly identify. The objectives should be those achievable within the project, not through subsequent development. They should be stated in a measurable and verifiable form, including through the milestones that will be indicated under section 1.3 below.

1.2 Progress beyond the state-of-the-art (*maximum length: 4 pages*).

Describe the state-of-the-art in the area concerned, and the advance that the proposed project would bring about in terms of integrated provision of infrastructure related services. If applicable, refer to the results of any patent search you might have carried out.

1.2.1 Explain how the ensemble of the “networking activities”, will enhance the services provided by the research infrastructures in the proposed programme of activities. Indicate how the networking activities will foster a culture of co-operation between the participants in the project and the scientific communities benefiting from the research infrastructures.

1.2.2 On the basis of the ensemble of the “transnational access activities and or service activities”, explain the overall coherence of the set of infrastructures offering access. Indicate to what extent the activities will offer access to state-of-the-art infrastructures, high quality services, and will enable users to conduct high quality research.

1.2.3 Looking at the ensemble of the proposed “joint research activities” (*JRAs*) explain how these activities will contribute to quantitative and qualitative improvements of the services provided by the infrastructures.

1.3 S/T methodology and associated work plan

A detailed work plan should be presented, broken down into work packages¹ (WPs) which should follow the logical phases of the implementation of the project, and include consortium management and assessment of progress and results. (Please note that your overall approach to management will be described later, in section 2).

Please present your plans as follows:

- i) Describe the overall strategy of the work plan (*maximum length: 1 page*). Describe in particular how the various types of activities (i.e. networking, transnational access and/or service activities and the joint research activities) will be integrated with one another.

¹ In an Integrating Activity a work package represents a single activity (management, or a transnational access activity, or a service activity, or a joint research activity).

- ii) Show the timing of the different WPs and their components (Gantt chart or similar)
 - iii) Provide a detailed work description broken down into work packages:
 - Work package list (please use table 1.3a);
 - Deliverables list (please use tables 1.3b1 and 1.3b2);
 - List of milestones (please use table 1.3c);
 - Description of each work package (please use tables 1.3d1 and 1.3 d2);
Please note that each individual Work package description should not exceed 4 pages.
 - Summary effort table (please use table 1.3e)
 - iv) Provide a graphical presentation of the components showing their interdependencies (Pert diagram or similar)
 - v) Describe any significant risks, and associated contingency plans. (*maximum length: 3 pages*).
-

Table 1.3 a: Work package list

Work package No ¹	Work package title	Type of activity ²	Lead participant No ³	Lead participant short name	Person-months ⁴	Start month ⁵	End month ⁵	Indicative Total costs	Indicative requested EC contribution
WP1	Management	MGT							
WP2	Title of Networking Activity 1	COORD							
...	...								
WPx	Title of transnational access/Service Activity 1	SUPP							
...	...								
WPy	Title of Joint research Activity 1	RTD							
...	...								
	TOTAL								

¹ Work package number: WP 1 – WP n.

² Please indicate one activity per work package:

RTD = Joint Research Activity ;; MGT = Management of the consortium; COORD: Networking activity; SUPP: transnational access activity or service activity; According to the description given previously in section 2.2 of the guide.

³ Number of the participant leading the work in this work package.

⁴ The total number of person-months allocated to each work package, except human effort already included in the calculation of the access costs.

⁵ Measured in months from the project start date (month 1).

Table 1.3 b1: Deliverables List

Del. no. ¹	Deliverable name	WP no.	Nature ²	Dissemination level ³	Delivery date ⁴

¹ Deliverable numbers in order of delivery dates. Please use the numbering convention <WP number>.<number of deliverable within that WP>. For example, deliverable 4.2 would be the second deliverable from work package 4. Do not use this table for the provision of transnational access to be summarised in table 1.3 b2

² Please indicate the nature of the deliverable using one of the following codes:

R = Report, **P** = Prototype, **D** = Demonstrator, **O** = Other

³ Please indicate the dissemination level using one of the following codes:

PU = Public

PP = Restricted to other programme participants (including the Commission Services).

RE = Restricted to a group specified by the consortium (including the Commission Services).

CO = Confidential, only for members of the consortium (including the Commission Services)

⁴ Measured in months from the project start date (month 1).

Table 1.3b2 : Summary of transnational access provision

<i>Participant number</i>	<i>Organisation short name</i>	<i>Short name of infrastructure</i>	<i>Installation</i>		<i>Operator country code²</i>	<i>Unit of access</i>	<i>Unit cost (€)</i>	<i>Min. quantity of access to be provided</i>	<i>Estimated number of users</i>	<i>Estimated number of projects</i>
			<i>number¹</i>	<i>Short name</i>						

YOU MAY EXTEND THIS TABLE IF NECESSARY

¹ Number progressively the installations of a same infrastructure. An installation is a part of an *infrastructure* that could be used independently from the rest.

² Give the country code of the operator of the infrastructure or INO if the operator is an international organization

Table 1.3 c List of milestones

Milestones are control points where decisions are needed with regard to the next stage of the project. For example, a milestone may occur when a major result has been achieved, if its successful attainment is required for the next phase of work. Another example would be a point when the consortium must decide which of several technologies to adopt for further development.

Milestone number	Milestone name	Work package(s) involved	Expected date ¹	Means of verification²

¹ Measured in months from the project start date (month 1).

² Show how you will confirm that the milestone has been attained. Refer to indicators if appropriate. For example: a laboratory prototype completed and running flawlessly; software released and validated by a user group; field survey complete and data quality validated.

Table 1.3 d1: Work package description for Management, Networking activity or Joint research activity

For each work package:

Work package number		Start date or starting event:					
Work package title							
Activity Type¹							
Participant number							
Participant short name							
Person-months per participant²:							

Objectives

Description of work (possibly broken down into tasks), and role of participants

Deliverables (brief description and month of delivery)

¹ Please indicate one activity per work package:
 RTD = Joint Research Activity;; MGT = Management of the consortium; COORD: Coordination activity; SUPP: transnational access activity or service activity; .
² except human effort already included in the calculation of the access costs.

Table 1.3 d2: Work package description for Transnational access or service activity**For each work package:**

Work package number		Start date or starting event:					
Work package title							
Activity Type¹							
Participant number							
Participant short name							
Person-months per participant²:							

Description of the infrastructure
<u>Name of the infrastructure:</u>
<u>Location (town, country):</u> <i>If the infrastructure comprises installations (i.e. parts of the infrastructure that can be used independently and for which the operating costs can be singled out) at different locations, indicate briefly the location of each installation and give a justification for considering them as a single infrastructure.</i>
<u>Web site address:</u>
<u>Legal name of organisation operating the infrastructure:</u>
<u>Location of organisation (town, country):</u>
<u>Annual operating costs (excl. investment costs) of the infrastructure (€):</u>
<u>Description of the infrastructure:</u> <i>Give a brief general description of the infrastructure to which access is offered. Illustrate, in particular, its state-of-the-art equipment and services offered to users that make it rare or unique in Europe. Outline the areas of research normally supported by the infrastructure, as well as new areas opening to users, if any. If the infrastructure is part of a larger ensemble (other installations, laboratories, etc.), describe their relationship and its impact on the scientific environment, from which visiting scientists may benefit. If parts of the infrastructure are still under construction, specify the starting date of construction and indicate the date when access can realistically be made available.</i>
<u>Services currently offered by the infrastructure:</u> <i>Describe the services offered by the infrastructure and its research environment, and demonstrate how it will enable scientists to carry out high quality research (you should summarise some of the most interesting scientific achievements already obtained by users). Demonstrate that there is a widespread interest from users in other countries to conduct research at the infrastructure (or make otherwise use of its services), e.g. indicate the number of international users currently using the facility per year.</i>

¹ Please indicate one activity per work package:

RTD = Joint Research Activity;; MGT = Management of the consortium; COORD: Coordination activity; SUPP: transnational access activity or service activity; .

² except human effort already included in the calculation of the access costs.

Description of work

When some of the following elements are common for all the infrastructures of the Integrating Activity (e.g. a unique entry point for requesting access and/or a single Selection/Review Panel) they can be described only once under one of the networking activities.

Modality of access under this proposal: *Outline how a user, or user group, will be given access to the infrastructure, or to its services, e.g. typical location and duration of work, type of equipment/service used, expected output/deliverables, etc. Where relevant, indicate how the users will be integrated into the scheduling of the infrastructure and the degree of independence they will experience with respect to the normal research activity of the infrastructure.*

Support offered under this proposal: *Describe the scientific, technical and logistic support that would be offered to the users. Where relevant, emphasise the quality of the scientific environment in which the users will be working and explain how this might stimulate their research. Explain to what extent such support is already normally provided to external users.*

Outreach of new users: *State what measures will be taken, or have been taken, to attract potential new users (e.g. web-page, call for proposals, etc.), including users from new areas of research, if appropriate. Indicate why and to which extent the Community funding of this Transnational access and/or service activity will provide European research teams with new opportunities of access to the infrastructure. Indicate if the number of international users is expected to increase as a result of this proposal. If the infrastructure is being opened to international users for the first time, what evidence is there that there will be sufficient demand to use the access being offered in this proposal?*

Review procedure under this proposal: *For transnational access activities, describe the peer review procedure that will be used to select users under this proposal. Outline the composition of the User Selection Panel. Demonstrate that the selection of users will follow the principles of transparency, fairness and impartiality. For services activities, describe ourhow the periodical assessment of the services offered to the scientific community will be carried out (i.e, international review panel).*

Give a multi annual implementation plan for the full duration of the proposed project using the table below (implementation plan). The implementation plan quantifies the minimum quantity of access to be provided (e.g. in terms of beam-hours, experimental days) by the infrastructure if the proposal were to be accepted for funding, including the estimated number of users, number of person-days they will spend at the infrastructure and corresponding number of user projects. This table should include as many lines as necessary when the infrastructure is made up of several installations.

Implementation plan

Short name of installation	Unit of access	Unit cost	Min. quantity of access to be provided	Estimated number of users	Estimated number of days spent at the infrastructure	Estimated number of projects

Unit of Access: Define clearly the unit of access being offered and indicate what is covered and included (e.g. preparatory work, specific training courses) in one unit. This is essential also to justify the corresponding costs (see section 2.4 of this annex).

Table 1.3 e **Summary of staff effort**

A summary of the staff effort is useful for the evaluators. Please indicate in the table the number of person months over the whole duration of the planned work, for each work package (except human effort already included in the calculation of access costs), for each participant. Identify the work-package leader for each WP by showing the relevant person-month figure in bold.

Participant no./short name	WP1	WP2	WP3	...	Total person months
Part.1 short name					
...					
...					
...					
Total					

2. Implementation

2.1 Management structure and procedures

Describe the organisational structure and decision-making mechanisms of the project. Show how they are matched to the complexity and scale of the project.

(Maximum length for Section 2.1: five pages)

2.2 Individual participants

For each participant in the proposed project, provide a brief description of the legal entity, the main tasks they have been attributed, and the previous experience relevant to those tasks. Provide also a short profile of the staff members who will be undertaking the work.

(Maximum length for Section 2.2: in average half a page per participant.

The maximum length applying to a legal entity composed of several members, each of which is a separate legal entity, is in average half a page per member, provided that the members have quite distinct roles within the proposal.)

2.3 Consortium as a whole

Describe how the participants collectively constitute a consortium capable of achieving the project objectives, and how they are suited and are committed to the tasks assigned to them. Show the complementarity between participants. Explain how the composition of the consortium is well-balanced in relation to the objectives of the project.

If appropriate describe the industrial/commercial involvement to ensure exploitation of the results, and how the opportunity of involving SMEs has been addressed.

i) Sub-contracting: If any part of the work is to be sub-contracted by the participant responsible for it, describe the work involved and explain why a sub-contract approach has been chosen for it.

ii) Other countries: If one or more of the participants requesting EU funding is based in a country that is outside the EU, and is not an Associated Country, and is not on the list of International Cooperation Partner Countries¹, explain in terms of the project's objectives why such funding would be essential.

iii) Additional partners: If there are as-yet-unidentified participants in the project, the expected competences, the role of the potential participants and their integration into the running project should be described. **However, these as-yet-unidentified participants will not be counted in the minimum number of participants condition regarding the eligibility of the proposal.**

(No maximum length applies to this section)

2.4 Resources to be committed

¹ See CORDIS web-site, and annex 1 of the work programme.

Describe how the totality of the necessary resources will be mobilised, including any resources that will complement the EC contribution. Show how the resources will be integrated in a coherent way, and show how the overall financial plan for the project is adequate.

In addition to the costs indicated in Part A3 of the proposal, and the staff effort shown in section 1.3 above, please indicate any other major costs (e.g. equipment) per WP.

Access costs:

For Transnational access, each individual unit cost must be calculated by using the excel table available on CORDIS at http://cordis.europa.eu/fp7/capacities/research-infrastructures_en.html

The tables once completed should be inserted in this document.

For Services, the access costs must be calculated by using the excel table available on CORDIS at http://cordis.europa.eu/fp7/capacities/research-infrastructures_en.html

The tables once completed should be inserted in this document.

Please ensure that the figures stated in part B are consistent with those in Part A.

(Maximum length for Section 2.4 – two pages excluding tables)

3. Impact

3.1 Expected impacts listed in the work programme

Describe how your project will contribute towards the expected impacts listed in the work programme in relation to the topic in question. Mention the steps that will be needed to bring about these impacts. Explain why this contribution requires a European (rather than a national or local) approach. Indicate how account is taken of other national or international research activities. Mention any assumptions and external factors that may determine whether the impacts will be achieved.

3.2 Dissemination and/or exploitation of project results, and management of intellectual property

Describe the measures you propose for the dissemination and/or exploitation of project results, and the management of knowledge, of intellectual property.

(Maximum length for the whole of Section 3 – five pages)

4. Ethical Issues

Describe any ethical issues that may arise in their proposal. In particular, you should explain the benefit and burden of their experiments and the effects it may have on the research subject.

The following special issues should be taken into account:

Informed consent: When describing issues relating to informed consent, it will be necessary to illustrate an appropriate level of ethical sensitivity, and consider issues of insurance, incidental findings and the consequences of leaving the study.

Data protection issues: Avoid the unnecessary collection and use of personal data. Identify the source of the data, describing whether it is collected as part of the research or is previously collected data being used. Consider issues of informed consent for any data being used. Describe how personal identify of the data is protected.

Use of animals: Where animals are used in research the application of the 3Rs (Replace, Reduce, Refine) must be convincingly addressed. Numbers of animals should be specified. Describe what happens to the animals after the research experiments.

Human embryonic stem cells: Research proposals that will involve human embryonic stem cells (hESC) will have to address all the following specific points:

- the necessity to use hESC in order to achieve the scientific objectives set forth in the proposal.
- whether the applicants have taken into account the legislation, regulations, ethical rules and/or codes of conduct in place in the country(ies) where the research using hESC is to take place, including the procedures for obtaining informed consent;
- the source of the hESC
- the measures taken to protect personal data, including genetic data, and privacy;
- the nature of financial inducements, if any.

Identify the countries where research will be undertaken and which ethical committees and regulatory organisations will need to be approached during the life of the project.

Include the Ethical issues table below. If you indicate YES to any issue, please identify the pages in the proposal where this ethical issue is described. Answering 'YES' to some of these boxes does not automatically lead to an ethical review. It enables the independent experts to decide if an ethical review is required. If you are sure that none of the issues apply to your proposal, simply tick the YES box in the last row.

(No maximum length for Section 4: Depends on the number of such issues involved)

Note:

Only in exceptional cases will additional information be sought for clarification, which means that any ethical review will be performed solely on the basis of the information available in the proposal. Projects raising specific ethical issues such as research intervention on human beings¹; research on human embryos and human embryonic stem cells and non-human primates are automatically submitted for ethical review.

To ensure compliance with ethical principles, the Commission Services will undertake ethics audit(s) of selected projects at its discretion.

A dedicated website that aims to provide clear, helpful information on ethical issues is now available at: http://cordis.europa.eu/fp7/ethics_en.html.

¹ Such as clinical trials, and research involving invasive techniques on persons (e.g. taking of tissue samples, examinations of the brain).

ETHICAL ISSUES TABLE

	YES	PAGE
Informed Consent		
• Does the proposal involve children?		
• Does the proposal involve patients or persons not able to give consent?		
• Does the proposal involve adult healthy volunteers?		
• Does the proposal involve Human Genetic Material?		
• Does the proposal involve Human biological samples?		
• Does the proposal involve Human data collection?		
Research on Human embryo/foetus		
• Does the proposal involve Human Embryos?		
• Does the proposal involve Human Foetal Tissue / Cells?		
• Does the proposal involve Human Embryonic Stem Cells?		
Privacy		
• Does the proposal involve processing of genetic information or personal data (eg. health, sexual lifestyle, ethnicity, political opinion, religious or philosophical conviction)		
• Does the proposal involve tracking the location or observation of people?		
Research on Animals		
• Does the proposal involve research on animals?		
• Are those animals transgenic small laboratory animals?		
• Are those animals transgenic farm animals?		
• Are those animals cloned farm animals?		
• Are those animals non-human primates?		
Research Involving Developing Countries		
• Use of local resources (genetic, animal, plant etc)		
• Impact on a local community		
Dual Use and potential for terrorist abuse		
• Research having direct military application		
• Research having the potential for terrorist abuse		
I CONFIRM THAT NONE OF THE ABOVE ISSUES APPLY TO MY PROPOSAL		

5. Consideration of gender aspects

You may give an indication of the sort of actions that would be undertaken during the course of the project to promote gender equality in your project, or in your field of research. (These will not be evaluated, but will be discussed during negotiations should your proposal be successful).

These could include actions related to the project consortium (e.g. improving the gender balance in the project consortium, measures to help reconcile work and private life, awareness raising within the consortium) or, where appropriate, actions aimed at a wider public (e.g. events organised in schools or universities)

(Maximum length for section 5 – one page)