

# Krasnoyarsk Regional Information Node (RIN)



RUSERA-EXE  
FP6-0043701  
(2006 – 2008)

Re. Manager Natalia Edwards

# Krasnoyarsk RIN's Expertise in Framework Programs



**RIN's FP Projects Coordinated by the Association of Engineering Education of Russia:**

- RUSERA (Russia and European Research Area), FP6-502262 (2003 – 2004);
- SITE - (Siberia, IT and Europe) FP6-004123 (2004 – 2006);
- RUSERA-EXE, FP6-0043701 (2006 – 2008)  
230 researchers from the region covered by the RIN's activities;  
6 FP projects developed within the RIN, one is funded

# Stereotypes about European



*The RIN's investigation on some wide-spread opinions and stereotypes about European partners, was carried out among the regional researchers involved in Russian-European collaboration:*

- 1) high life standard all over Europe
- 2) high quality of life and working conditions of EU researchers
- 3) European partners are trustworthy
- 4) European citizens tend to be involved in long-life learning, therefore they are better educated
- 5) laws and regulations are strictly observed by all EU citizens
- 6) high quality of all European services and products (there exists a saying "..as in Europe", which implies "very good")

# Obstacles in RU-EU joint research (from European point)



- Weak command of English for communications and joint work
- Geographically remote location of Siberia
- Too high expectations towards European partners and project funding
- Underestimation of IPR as a prerequisite of any joint project initiation
- Overestimation or underestimation of the own research value
- Strong belief that the “Big Boss” should be the principle investigator in projects, from the RU side

# Obstacles in RU-EU joint research (from Russian point)



- Uninformed of the terms and time required for arranging the formalities (patents, permits, Agreements, etc.) in Russia
- Tendency to “no reply to messages” if the answer is “no”
- Lack of knowledge about FP regulations (who may participate, coordinate, etc.) among EU universities and SME
- Difficult to obtain a Russian business visa (1-2 months)

Re. Manager Natalia Edwards

# Inter-cultural Misunderstandings



*There exist two common beliefs about cross-cultural dimension of R&D:*

- Research process and regulations in EU are absolutely different from the same processes in RU.
- Research process and regulations in EU are the same in RU, they are all R&D activities.

*Both extremes are misleading.*

Re. Manager Natalia Edwards

# Joint R&D Basics



- Though inter-cultural aspects are important, one can only be a successful project partner by understanding how the research lifecycle works and how a project is developed and implemented;
- In joint R&D and FP project activities, accepted regulations should be used: IRP rules, Work Programs, Guides for Applicants, Ethics Rules, etc.
- In communications, researchers should be guided by accepted business etiquette rules and take into account inter-cultural aspects.

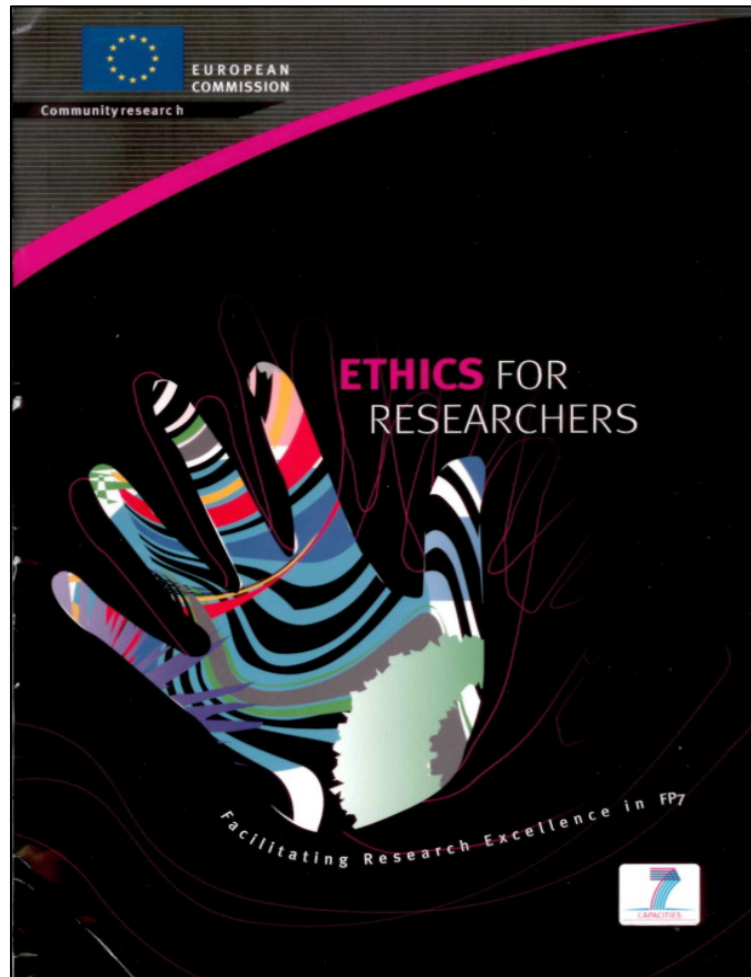
# Inter-cultural Understanding



- People are influenced by their culture, but other things as well - most importantly, their professional socialization – in management, in science, or in engineering fields.
- Professional socialization gives all researchers important commonalities;
- Joint R&D is a two-way process: both sides modify and enrich each other's awareness, attitudes and behavior.

Re. Manager Natalia Edwards

# What to do?



- To raise awareness in cross-cultural, ethic, and collaborative aspects through consultancies
- To introduce researchers into European Codes applicable to joint activities in R&D
- To raise proficiency in English for better communication through ESP course

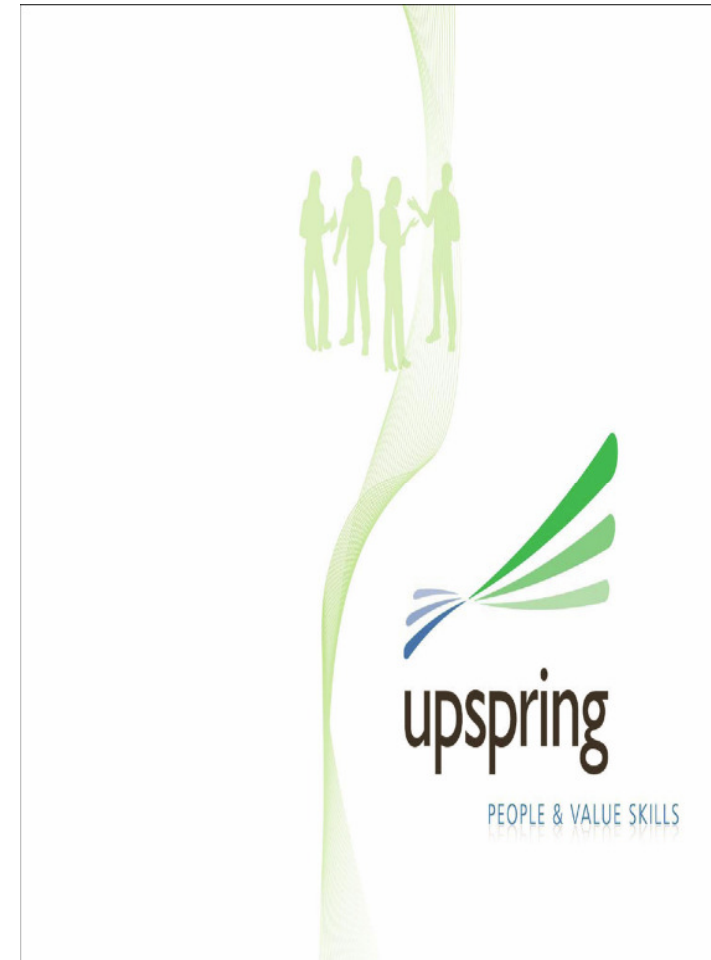
Re. Manager Natalia Edwards

# Learn Concepts of European Research Ethics



*Available sources:*

[http://cordis.europa.eu/fp7/ethics\\_en.html#ethics\\_sd](http://cordis.europa.eu/fp7/ethics_en.html#ethics_sd)



Re. Manager Natalia Edwards